

## Summary

<b>Production Name</b>	LEFTY Rabbit Polyclonal Antibody
<b>Description</b>	Primary antibody
<b>Host</b>	Rabbit
<b>Application</b>	WB,ELISA
<b>Reactivity</b>	Human,Mouse

## Performance

<b>Conjugation</b>	Unconjugated
<b>Modification</b>	Unmodified
<b>Isotype</b>	IgG
<b>Clonality</b>	Polyclonal Antibody
<b>Form</b>	Liquid
<b>Storage</b>	Store at 4°C short term. Aliquot and store at -20°C long term. Avoid freeze/thaw cycles.
<b>Buffer</b>	Liquid in PBS containing 50% glycerol, 0.5% BSA and 0.02% sodium azide, pH 7.3.
<b>Purification</b>	Affinity Purified

## Immunogen

<b>Gene Name</b>	LEFTY1/LEFTY2 LEFTY1; LEFTB; LEFTYB; Left-right determination factor 1; Left-right determination factor B; Protein lefty-1; Protein lefty-B; LEFTY2; EBAF; LEFTA; LEFTYA; TGFB4; PSEC0024;
<b>Alternative Names</b>	Left-right determination factor 2; Endometrial bleeding-associated factor; Left-right determination factor A; Protein lefty-2; Protein lefty-A; Transforming growth factor beta-4; TGF-beta-4
<b>Gene ID</b>	10637/7044
<b>SwissProt ID</b>	O75610/O00292

## Application

<b>Dilution Ratio</b>	WB: 1/500-1/1000 ELISA: 1/10000
<b>Molecular Weight</b>	Calculated MW: 41 kDa; Observed MW: 41 kDa

**Product Name: LEFTY Rabbit Polyclonal Antibody**  
**Catalog #: APRab00796**



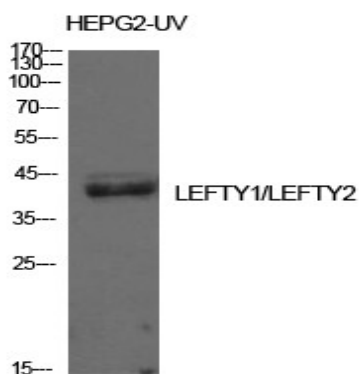
## Background

Required for left-right axis determination as a regulator of LEFTY2 and NODAL.

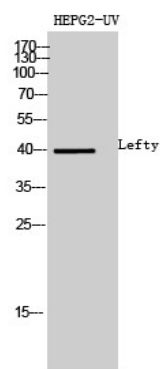
## Research Area

Stem Cells

## Image Data



Western blot analysis of LEFTY in HepG2UV lysates using LEFTY antibody.



Western blot analysis of LEFTY in HEPG2UV lysates using Lefty antibody.

## Note

For research use only.