

**Product Name: Phospho-IGF1 Receptor  
(Tyr1165/Tyr1166) Rabbit Polyclonal Antibody  
Catalog #: APRab00790**

---

## Summary

<b>Production Name</b>	Phospho-IGF1 Receptor (Tyr1165/Tyr1166) Rabbit Polyclonal Antibody
<b>Description</b>	Primary antibody
<b>Host</b>	Rabbit
<b>Application</b>	WB,ELISA
<b>Reactivity</b>	Human,Mouse,Rat,Monkey

## Performance

<b>Conjugation</b>	Unconjugated
<b>Modification</b>	Phosphorylated
<b>Isotype</b>	IgG
<b>Clonality</b>	Polyclonal Antibody
<b>Form</b>	Liquid
<b>Storage</b>	Store at 4°C short term. Aliquot and store at -20°C long term. Avoid freeze/thaw cycles.
<b>Buffer</b>	Liquid in PBS containing 50% glycerol, 0.5% BSA and 0.02% sodium azide, pH 7.3.
<b>Purification</b>	Affinity Purified

## Immunogen

<b>Gene Name</b>	IGF1R
<b>Alternative Names</b>	IGF1R; Insulin-like growth factor 1 receptor; Insulin-like growth factor I receptor; IGF-I receptor; CD antigen CD221
<b>Gene ID</b>	3480
<b>SwissProt ID</b>	P08069

## Application

<b>Dilution Ratio</b>	WB: 1/500-1/1000 ELISA: 1/10000
<b>Molecular Weight</b>	Calculated MW: 155 kDa; Observed MW: 155 kDa

**Product Name: Phospho-IGF1 Receptor  
(Tyr1165/Tyr1166) Rabbit Polyclonal Antibody  
Catalog #: APRab00790**

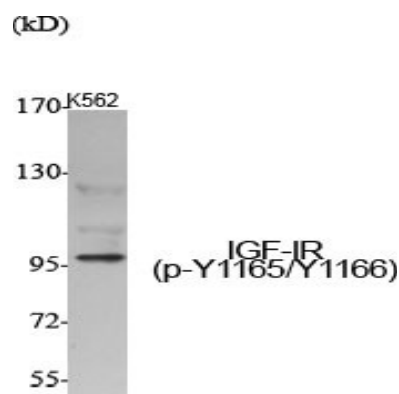
## Background

This receptor binds insulin-like growth factor with a high affinity. It has tyrosine kinase activity. The insulin-like growth factor I receptor plays a critical role in transformation events. Cleavage of the precursor generates alpha and beta subunits. It is highly overexpressed in most malignant tissues where it functions as an anti-apoptotic agent by enhancing cell survival. Alternatively spliced transcript variants encoding distinct isoforms have been found for this gene. [provided by RefSeq, May 2014]

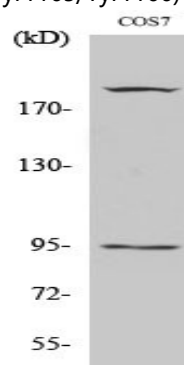
## Research Area

Signal Transduction

## Image Data



Western blot analysis of Phospho-IGF1 Receptor (Tyr1165/Tyr1166) in various lysates using Phospho-IGF1 Receptor (Tyr1165/Tyr1166) antibody.



Western blot analysis of Phospho-IGF1 Receptor (Tyr1165/Tyr1166) in COS7 lysates using Phospho-IGF1 Receptor (Y1165/Y1166) antibody.

## Note

For research use only.

**Product Name: Phospho-IGF1 Receptor  
(Tyr1165/Tyr1166) Rabbit Polyclonal Antibody  
Catalog #: APRab00790**

---

