

Product Name: Phospho-IRS1 (Ser636) Rabbit Polyclonal Antibody
Catalog #: APRab00788

Summary

Production Name	Phospho-IRS1 (Ser636) Rabbit Polyclonal Antibody
Description	Primary antibody
Host	Rabbit
Application	WB,IHC-F,IHC-P,ICC/IF,ELISA
Reactivity	Human,Mouse,Rat

Performance

Conjugation	Unconjugated
Modification	Phosphorylated
Isotype	IgG
Clonality	Polyclonal Antibody
Form	Liquid
Storage	Store at 4°C short term. Aliquot and store at -20°C long term. Avoid freeze/thaw cycles.
Buffer	Liquid in PBS containing 50% glycerol, 0.5% BSA and 0.02% sodium azide, pH 7.3.
Purification	Affinity Purified

Immunogen

Gene Name	IRS1
Alternative Names	IRS1; Insulin receptor substrate 1; IRS-1
Gene ID	3667
SwissProt ID	P35568

Application

Dilution Ratio	WB: 1/500-1/1000 IHC: 1/50-1/100 IF: 1/50-1/200 ELISA: 1/10000
Molecular Weight	Calculated MW: 132 kDa; Observed MW: 150 kDa

Background

Product Name: Phospho-IRS1 (Ser636) Rabbit Polyclonal Antibody
Catalog #: APRab00788

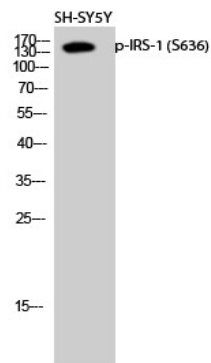


May mediate the control of various cellular processes by insulin. When phosphorylated by the insulin receptor binds specifically to various cellular proteins containing SH2 domains such as phosphatidylinositol 3-kinase p85 subunit or GRB2. Activates phosphatidylinositol 3-kinase when bound to the regulatory p85 subunit .

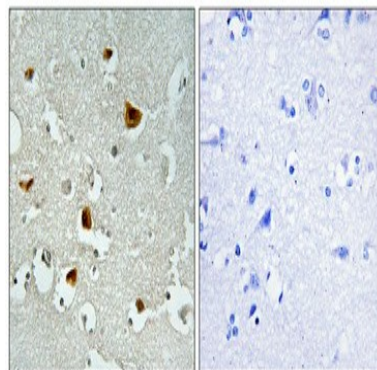
Research Area

Tags & Cell Markers

Image Data



Western blot analysis of Phospho-IRS1 (Ser636) in SH-SY5Y lysates using Phospho-IRS1 (S636) antibody.



Immunohistochemistry analysis of paraffin-embedded Human brain using Phospho-IRS1 (Ser636) antibody. High-pressure and temperature Tris-EDTA pH 8.0 was used for antigen retrieval. Sample with blocking peptide on the right.

Note

For research use only.