

Product Name: Phospho-Smad2 (Ser255) Rabbit Polyclonal Antibody
Catalog #: APRab00705

Summary

Production Name	Phospho-Smad2 (Ser255) Rabbit Polyclonal Antibody
Description	Primary antibody
Host	Rabbit
Application	WB,IHC-P,IP
Reactivity	Human,Mouse,Rat

Performance

Conjugation	Unconjugated
Modification	Phosphorylated
Isotype	IgG
Clonality	Polyclonal Antibody
Form	Liquid
Storage	Store at 4°C short term. Aliquot and store at -20°C long term. Avoid freeze/thaw cycles.
Buffer	Rabbit IgG in phosphate buffered saline , pH 7.4, 150mM NaCl, 0.02% sodium azide and 50% glycerol.
Purification	Affinity Chromatography

Immunogen

Gene Name	SMAD2
Alternative Names	SMAD2; MADH2; MADR2; Mothers against decapentaplegic homolog 2; MAD homolog 2; Mothers against DPP homolog 2; JV18-1; Mad-related protein 2; hMAD-2; SMAD family member 2; SMAD 2; Smad2; hSMAD2
Gene ID	4087
SwissProt ID	Q15796

Application

Dilution Ratio	WB: 1/500-1/1000 IHC: 1/50-1/100 IP: 1/20
Molecular Weight	Calculated MW: 52 kDa; Observed MW: 52 kDa

**Product Name: Phospho-Smad2 (Ser255) Rabbit
Polyclonal Antibody
Catalog #: APRab00705**

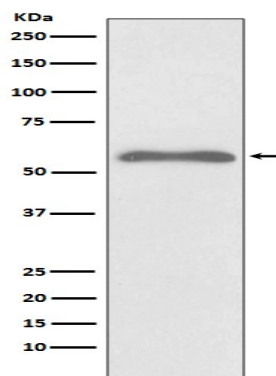
Background

The protein encoded by this gene belongs to the SMAD, a family of proteins similar to the gene products of the *Drosophila* gene 'mothers against decapentaplegic' (Mad) and the *C. elegans* gene Sma. SMAD proteins are signal transducers and transcriptional modulators that mediate multiple signaling pathways.

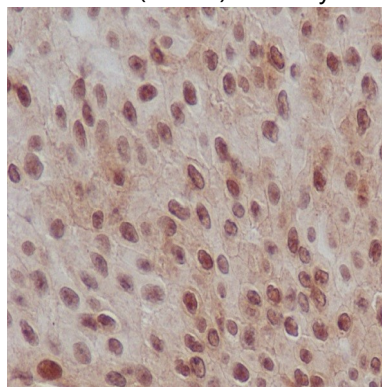
Research Area

Signal Transduction

Image Data



Western blot analysis of Phospho-Smad2 (S255) in HeLa treated with Okadaic acid and Calyculin A lysates using Phospho-Smad2 (Ser255) antibody.



Immunohistochemistry analysis of paraffin-embedded Human transitional carcinoma of bladder using Phospho-Smad2 (S255) antibody. High-pressure and temperature Sodium Citrate pH 6.0 was used for antigen retrieval.

Note

**Product Name: Phospho-Smad2 (Ser255) Rabbit
Polyclonal Antibody
Catalog #: APRab00705**



For research use only.