

Product Name: Phospho-Smad2 (Ser250) Rabbit Polyclonal Antibody
Catalog #: APRab00704

Summary

Production Name	Phospho-Smad2 (Ser250) Rabbit Polyclonal Antibody
Description	Primary antibody
Host	Rabbit
Application	WB,FC
Reactivity	Human,Mouse,Rat

Performance

Conjugation	Unconjugated
Modification	Phosphorylated
Isotype	IgG
Clonality	Polyclonal Antibody
Form	Liquid
Storage	Store at 4°C short term. Aliquot and store at -20°C long term. Avoid freeze/thaw cycles.
Buffer	Rabbit IgG in phosphate buffered saline , pH 7.4, 150mM NaCl, 0.02% sodium azide and 50% glycerol.
Purification	Affinity Chromatography

Immunogen

Gene Name	SMAD2
Alternative Names	SMAD2; MADH2; MADR2; Mothers against decapentaplegic homolog 2; MAD homolog 2; Mothers against DPP homolog 2; JV18-1; Mad-related protein 2; hMAD-2; SMAD family member 2; SMAD 2; Smad2; hSMAD2
Gene ID	4087
SwissProt ID	Q15796

Application

Dilution Ratio	WB: 1/500-1/1000 FC: 1/50-1/100
Molecular Weight	Calculated MW: 52 kDa; Observed MW: 58 kDa

Product Name: Phospho-Smad2 (Ser250) Rabbit Polyclonal Antibody
Catalog #: APRab00704

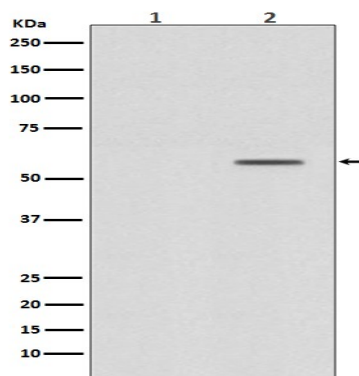
Background

The protein encoded by this gene belongs to the SMAD, a family of proteins similar to the gene products of the Drosophila gene 'mothers against decapentaplegic' (Mad) and the C. elegans gene Sma. SMAD proteins are signal transducers and transcriptional modulators that mediate multiple signaling pathways.

Research Area

Signal Transduction

Image Data



Western blot analysis of Phospho-Smad2 (S250) in (1) HeLa treated with alkaline phosphatase lysates; (2) HeLa lysates using Phospho-Smad2 (Ser250) antibody.

Note

For research use only.