

Product Name: Phospho-ATF2 (Thr71) Rabbit Polyclonal Antibody
Catalog #: APRab00696

Summary

| | |
|------------------------|---|
| Production Name | Phospho-ATF2 (Thr71) Rabbit Polyclonal Antibody |
| Description | Primary antibody |
| Host | Rabbit |
| Application | WB,ICC/IF,IP |
| Reactivity | Human |

Performance

| | |
|---------------------|--|
| Conjugation | Unconjugated |
| Modification | Phosphorylated |
| Isotype | IgG |
| Clonality | Polyclonal Antibody |
| Form | Liquid |
| Storage | Store at 4°C short term. Aliquot and store at -20°C long term. Avoid freeze/thaw cycles. |
| Buffer | Rabbit IgG in phosphate buffered saline , pH 7.4, 150mM NaCl, 0.02% sodium azide and 50% glycerol. |
| Purification | Affinity Chromatography |

Immunogen

| | |
|--------------------------|--|
| Gene Name | ATF2 |
| Alternative Names | ATF2; CREB2; CREBP1; Cyclic AMP-dependent transcription factor ATF-2; cAMP-dependent transcription factor ATF-2; Activating transcription factor 2; Cyclic AMP-responsive element-binding protein 2; CREB-2; cAMP-responsive element-binding pro |
| Gene ID | 1386 |
| SwissProt ID | P15336 |

Application

| | |
|-------------------------|--|
| Dilution Ratio | WB: 1/500-1/1000 IF: 1/50-1/200 IP: 1/20 |
| Molecular Weight | Calculated MW: 55 kDa; Observed MW: 70 kDa |

Product Name: Phospho-ATF2 (Thr71) Rabbit Polyclonal Antibody
Catalog #: APRab00696

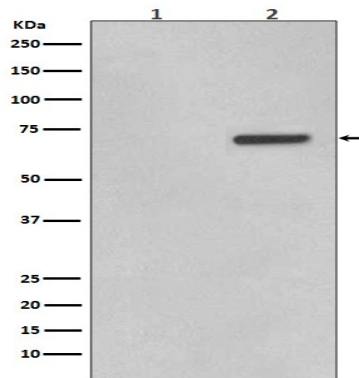
Background

This gene encodes a transcription factor that is a member of the leucine zipper family of DNA binding proteins. This protein binds to the cAMP-responsive element (CRE), an octameric palindrome. The protein forms a homodimer or heterodimer with c-Jun and stimulates CRE-dependent transcription. The protein is also a histone acetyltransferase (HAT) that specifically acetylates histones H2B and H4 in vitro;

Research Area

Epigenetics and Nuclear Signaling

Image Data



Western blot analysis of Phospho-ATF2 (T71) in (1) HeLa lysates; (2) HeLa lysates treated with Anisomycin using Phospho-ATF2 (Thr71) antibody.

Note

For research use only.