

**Product Name: Phospho-PAK1/2/3
(Ser144/Ser141/Ser154) Rabbit Polyclonal Antibody
Catalog #: APRab00680**

Summary

| | |
|------------------------|--|
| Production Name | Phospho-PAK1/2/3 (Ser144/Ser141/Ser154) Rabbit Polyclonal Antibody |
| Description | Primary antibody |
| Host | Rabbit |
| Application | WB,IHC-P,ICC,IF,FC,IP |
| Reactivity | Human,Mouse,Rat |

Performance

| | |
|---------------------|--|
| Conjugation | Unconjugated |
| Modification | Phosphorylated |
| Isotype | IgG |
| Clonality | Polyclonal Antibody |
| Form | Liquid |
| Storage | Store at 4°C short term. Aliquot and store at -20°C long term. Avoid freeze/thaw cycles. |
| Buffer | Rabbit IgG in phosphate buffered saline , pH 7.4, 150mM NaCl, 0.02% sodium azide and 50% glycerol. |
| Purification | Affinity Chromatography |

Immunogen

| | |
|--------------------------|---|
| Gene Name | PAK1/PAK2/PAK3 |
| Alternative Names | ADRB2; Alpha-PAK; CDC42/RAC effector kinase PAK-A; EC 2.7.11.1; P65-PAK; P68-PAK; PAK1 (phospho S144); PAK2 (phospho S141); PAK3 (phospho S154) |
| Gene ID | 5063/5058/5062 |
| SwissProt ID | O75914/Q13153/Q13177 |

Application

| | |
|-----------------------|---|
| Dilution Ratio | WB: 1/500-1/1000 IHC: 1/50-1/100 IF: 1/50-1/200 IP: 1/20 FC: 1/50-1/100 |
|-----------------------|---|

**Product Name: Phospho-PAK1/2/3
(Ser144/Ser141/Ser154) Rabbit Polyclonal Antibody
Catalog #: APRab00680**

Molecular Weight

Calculated MW: 61 kDa; Observed MW: 65 kDa

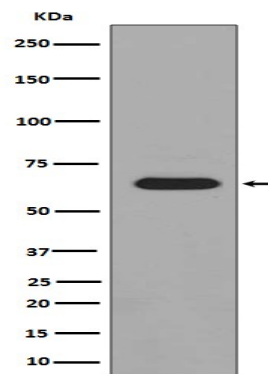
Background

PAK proteins are critical effectors that link RhoGTPases to cytoskeleton reorganization and nuclear signaling. PAK proteins, a family of serine/threonine p21-activating kinases, include PAK1, PAK2, PAK3 and PAK4.

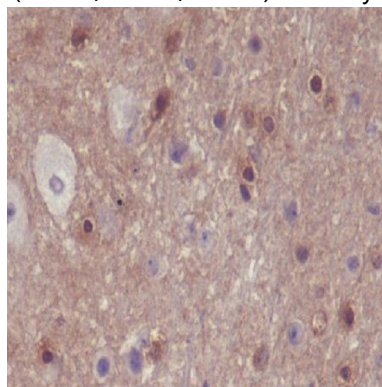
Research Area

Neuroscience

Image Data



Western blot analysis of Phospho-PAK1/2/3 in HeLa lysates treated with lambda phosphatase using Phospho-PAK1/2/3 (Ser144/Ser141/Ser154) antibody.



Immunohistochemistry analysis of paraffin-embedded mouse brain using Phospho-PAK1/2/3 (S144+S141+S139) antibody. High-pressure and temperature Sodium Citrate pH 6.0 was used for antigen retrieval.

Note

**Product Name: Phospho-PAK1/2/3
(Ser144/Ser141/Ser154) Rabbit Polyclonal Antibody
Catalog #: APRab00680**



For research use only.