

Product Name: Phospho-CREB (Ser133) Rabbit Polyclonal Antibody
Catalog #: APRab00672

Summary

Production Name	Phospho-CREB (Ser133) Rabbit Polyclonal Antibody
Description	Primary antibody
Host	Rabbit
Application	WB,IHC-P,ICC/IF,FC,IP
Reactivity	Human,Mouse,Rat

Performance

Conjugation	Unconjugated
Modification	Phosphorylated
Isotype	IgG
Clonality	Polyclonal Antibody
Form	Liquid
Storage	Store at 4°C short term. Aliquot and store at -20°C long term. Avoid freeze/thaw cycles.
Buffer	Rabbit IgG in phosphate buffered saline , pH 7.4, 150mM NaCl, 0.02% sodium azide and 50% glycerol.
Purification	Affinity Chromatography

Immunogen

Gene Name	CREB1
Alternative Names	CREB1; Cyclic AMP-responsive element-binding protein 1; CREB-1; cAMP-responsive element-binding protein 1
Gene ID	1385
SwissProt ID	P16220

Application

Dilution Ratio	WB: 1/500-1/1000 IHC: 1/50-1/100 IF: 1/50-1/200 IP: 1/20 FC: 1/50-1/100
-----------------------	---

Product Name: Phospho-CREB (Ser133) Rabbit Polyclonal Antibody
Catalog #: APRab00672

Molecular Weight

Calculated MW: 35 kDa; Observed MW: 46 kDa

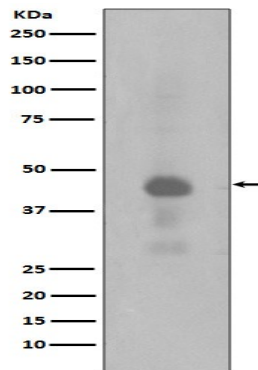
Background

This gene encodes a transcription factor that is a member of the leucine zipper family of DNA binding proteins. This protein binds as a homodimer to the cAMP-responsive element, an octameric palindrome.

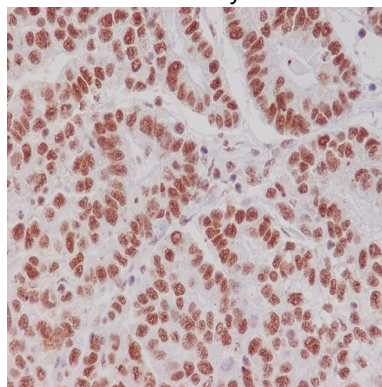
Research Area

Epigenetics and Nuclear Signaling

Image Data



Western blot analysis of Phospho-Creb(Ser133) in HeLa lysates treated with Calyculin A using Phospho-CREB (Ser133) antibody.



Immunohistochemistry analysis of paraffin-embedded Human gastric carcinoma using Phospho-Creb (S133) antibody. High-pressure and temperature Sodium Citrate pH 6.0 was used for antigen retrieval.

Note

For research use only.