

Summary

Production Name	GRO gamma Rabbit Polyclonal Antibody
Description	Primary antibody
Host	Rabbit
Application	IHC-P,ELISA
Reactivity	Human

Performance

Conjugation	Unconjugated
Modification	Unmodified
Isotype	IgG
Clonality	Polyclonal Antibody
Form	Liquid
Storage	Store at 4°C short term. Aliquot and store at -20°C long term. Avoid freeze/thaw cycles.
Buffer	Liquid in PBS containing 50% glycerol, 0.5% BSA and 0.02% sodium azide, pH 7.3.
Purification	Affinity Purified

Immunogen

Gene Name	CXCL3 CXCL3; GRO3; GROG; SCYB3; C-X-C motif chemokine 3; GRO-gamma(1-73); Growth-regulated protein gamma; GRO-gamma; Macrophage inflammatory protein 2-beta;
Alternative Names	MIP2-beta
Gene ID	2921
SwissProt ID	P19876

Application

Dilution Ratio	IHC: 1/50-1/100 ELISA: 1/10000
Molecular Weight	-

Product Name: GRO gamma Rabbit Polyclonal Antibody
Catalog #: APRab00655



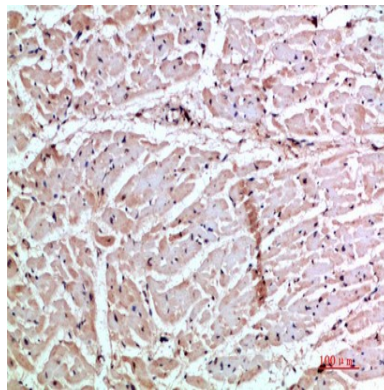
Background

Chemokine (C-X-C motif) ligand 3 (CXCL3) is a small cytokine belonging to the CXC chemokine family that is also known as GRO3 oncogene (GRO3), GRO protein gamma (GROg) and macrophage inflammatory protein-2-beta (MIP2b). CXCL3 controls migration and adhesion of monocytes and mediates its effects on its target cell by interacting with a cell surface chemokine receptor called CXCR2. More recently, it has been shown that Cxcl3 regulates cell autonomously the migration of the precursors of cerebellar granule neurons toward the internal layers of cerebellum, during the morphogenesis of cerebellum.

Research Area

Cardiovascular

Image Data



Immunohistochemistry analysis of paraffin-embedded Human heart using GRO gamma antibody. High-pressure and temperature Sodium Citrate pH 6.0 was used for antigen retrieval.

Note

For research use only.