

Summary

Production Name	RPA3 Rabbit Polyclonal Antibody
Description	Primary antibody
Host	Rabbit
Application	WB,ELISA
Reactivity	Human,Mouse

Performance

Conjugation	Unconjugated
Modification	Unmodified
Isotype	IgG
Clonality	Polyclonal Antibody
Form	Liquid
Storage	Store at 4°C short term. Aliquot and store at -20°C long term. Avoid freeze/thaw cycles.
Buffer	Liquid in PBS containing 50% glycerol, 0.5% BSA and 0.02% sodium azide, pH 7.3.
Purification	Affinity Purified

Immunogen

Gene Name	RPA3
Alternative Names	Replication protein A 14 kDa subunit (RP-A p14; Replication factor A protein 3; RF-A protein 3)
Gene ID	6119
SwissProt ID	P35244

Application

Dilution Ratio	WB: 1/500-1/1000 ELISA: 1/10000
Molecular Weight	Calculated MW: 14 kDa; Observed MW: 14 kDa

Background

Product Name: RPA3 Rabbit Polyclonal Antibody
Catalog #: APRab00652

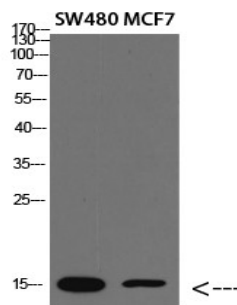


As part of the heterotrimeric replication protein A complex (RPA/RP-A), binds and stabilizes single-stranded DNA intermediates that form during DNA replication or upon DNA stress.

Research Area

Epigenetics and Nuclear Signaling

Image Data



Western blot analysis of RPA3 in SW480, MCF-7 lysates using RPA3 antibody.

Note

For research use only.