

## Summary

<b>Production Name</b>	HLA A Rabbit Polyclonal Antibody
<b>Description</b>	Primary antibody
<b>Host</b>	Rabbit
<b>Application</b>	WB,ELISA
<b>Reactivity</b>	Human

## Performance

<b>Conjugation</b>	Unconjugated
<b>Modification</b>	Unmodified
<b>Isotype</b>	IgG
<b>Clonality</b>	Polyclonal Antibody
<b>Form</b>	Liquid
<b>Storage</b>	Store at 4°C short term. Aliquot and store at -20°C long term. Avoid freeze/thaw cycles.
<b>Buffer</b>	Liquid in PBS containing 50% glycerol, 0.5% BSA and 0.02% sodium azide, pH 7.3.
<b>Purification</b>	Affinity Purified

## Immunogen

<b>Gene Name</b>	HLA-A
<b>Alternative Names</b>	Aw-68; HLA class I histocompatibility antigen; A-28 alpha chain; MHC class I antigen A*68; HLA-A; MHC class I antigen HLA A heavy chain
<b>Gene ID</b>	3105.0
<b>SwissProt ID</b>	P01891/P01892/P04439/P05534/P10314/P10316/P13746/P16189/P18462/P30443/P30450/P30453/P30455/P30456/P30457/P30512/Q09160

## Application

<b>Dilution Ratio</b>	WB: 1/500-1/1000 ELISA: 1/10000
<b>Molecular Weight</b>	Calculated MW: 41 kDa; Observed MW: 41 kDa

**Product Name: HLA A Rabbit Polyclonal Antibody**  
**Catalog #: APRab00649**



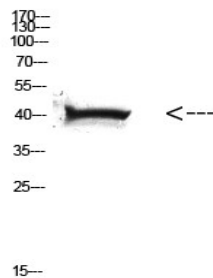
## Background

Antigen-presenting major histocompatibility complex class I (MHC I) molecule. In complex with B2M/beta 2 microglobulin displays primarily viral and tumor-derived peptides on antigen-presenting cells for recognition by alpha-beta T cell receptor (TCR) on HLA-A-restricted CD8-positive T cells, guiding antigen-specific T cell immune response to eliminate infected or transformed cells.

## Research Area

Immunology

## Image Data



Western blot analysis of HLA A in HELA lysates using HLA A antibody.

## Note

For research use only.