

**Product Name: Placental Lactogen Rabbit Polyclonal Antibody**  
**Catalog #: APRab00647**



---

## Summary

<b>Production Name</b>	Placental Lactogen Rabbit Polyclonal Antibody
<b>Description</b>	Primary antibody
<b>Host</b>	Rabbit
<b>Application</b>	WB,IHC-P,ELISA
<b>Reactivity</b>	Human

## Performance

<b>Conjugation</b>	Unconjugated
<b>Modification</b>	Unmodified
<b>Isotype</b>	IgG
<b>Clonality</b>	Polyclonal Antibody
<b>Form</b>	Liquid
<b>Storage</b>	Store at 4°C short term. Aliquot and store at -20°C long term. Avoid freeze/thaw cycles.
<b>Buffer</b>	Liquid in PBS containing 50% glycerol, 0.5% BSA and 0.02% sodium azide, pH 7.3.
<b>Purification</b>	Affinity Purified

## Immunogen

<b>Gene Name</b>	CSH1
<b>Alternative Names</b>	chorionic somatomammotropin hormone 1; PL; CSA; CS-1; CSMT; hCS-1; hCS-A
<b>Gene ID</b>	1442.0
<b>SwissProt ID</b>	PODML2

## Application

<b>Dilution Ratio</b>	WB: 1/500-1/1000 IHC: 1/50-1/100 ELISA: 1/10000
<b>Molecular Weight</b>	Calculated MW: 25 kDa; Observed MW: 25 kDa

## Background

---

**Product Name: Placental Lactogen Rabbit Polyclonal Antibody**  
**Catalog #: APRab00647**



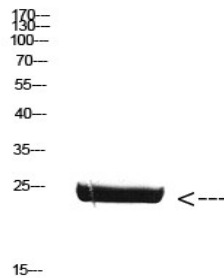
---

Produced only during pregnancy and is involved in stimulating lactation, fetal growth and metabolism.

## Research Area

Signal Transduction

## Image Data



Western blot analysis of Placental Lactogen in mouse brain lysates using Placental Lactogen antibody.

## Note

For research use only.