

Product Name: IL-10 Receptor alpha Rabbit Polyclonal Antibody
Catalog #: APRab00633



Summary

Production Name	IL-10 Receptor alpha Rabbit Polyclonal Antibody
Description	Primary antibody
Host	Rabbit
Application	WB,ELISA
Reactivity	Human

Performance

Conjugation	Unconjugated
Modification	Unmodified
Isotype	IgG
Clonality	Polyclonal Antibody
Form	Liquid
Storage	Store at 4°C short term. Aliquot and store at -20°C long term. Avoid freeze/thaw cycles.
Buffer	Liquid in PBS containing 50% glycerol, 0.5% BSA and 0.02% sodium azide, pH 7.3.
Purification	Affinity Purified

Immunogen

Gene Name	IL10RA IL10RA; IL10R; Interleukin-10 receptor subunit alpha; IL-10 receptor subunit alpha; IL-
Alternative Names	10R subunit alpha; IL-10RA; CDw210a; Interleukin-10 receptor subunit 1; IL-10R subunit 1; IL-10R1; CD antigen CD210
Gene ID	3587
SwissProt ID	Q13651

Application

Dilution Ratio	WB: 1/500-1/1000 ELISA: 1/10000
Molecular Weight	Calculated MW: 63 kDa; Observed MW: 63 kDa

Product Name: IL-10 Receptor alpha Rabbit Polyclonal Antibody
Catalog #: APRab00633



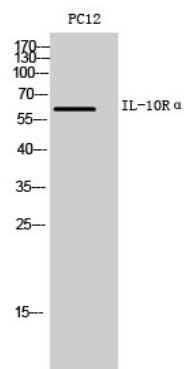
Background

The protein encoded by this gene is a receptor for interleukin 10. This protein is structurally related to interferon receptors. It has been shown to mediate the immunosuppressive signal of interleukin 10, and thus inhibits the synthesis of proinflammatory cytokines. This receptor is reported to promote survival of progenitor myeloid cells through the insulin receptor substrate-2/PI 3-kinase/AKT pathway. Activation of this receptor leads to tyrosine phosphorylation of JAK1 and TYK2 kinases. Two transcript variants, one protein-coding and the other not protein-coding, have been found for this gene.

Research Area

Immunology

Image Data



Western blot analysis of IL-10 Receptor alpha in PC-12 lysates using IL-10 Receptor alpha antibody.

Note

For research use only.