

Product Name: Lymphotactin Rabbit Polyclonal Antibody
Catalog #: APRab00621

Summary

Production Name	Lymphotactin Rabbit Polyclonal Antibody
Description	Primary antibody
Host	Rabbit
Application	WB,ELISA
Reactivity	Human

Performance

Conjugation	Unconjugated
Modification	Unmodified
Isotype	IgG
Clonality	Polyclonal Antibody
Form	Liquid
Storage	Store at 4°C short term. Aliquot and store at -20°C long term. Avoid freeze/thaw cycles.
Buffer	Liquid in PBS containing 50% glycerol, 0.5% BSA and 0.02% sodium azide, pH 7.3.
Purification	Affinity Purified

Immunogen

Gene Name	XCL1/XCL2 XCL1; LTN; SCYC1; Lymphotactin; ATAC; C motif chemokine 1; Cytokine SCM-1;
Alternative Names	Lymphotaxin; SCM-1-alpha; Small-inducible cytokine C1; XC chemokine ligand 1; XCL2; SCYC2; Cytokine SCM-1 beta; C motif chemokine 2; XC chemokine ligand 2
Gene ID	6375/6846
SwissProt ID	P47992/Q9UBD3

Application

Dilution Ratio	WB: 1/500-1/1000 ELISA: 1/10000
Molecular Weight	Calculated MW: 13 kDa; Observed MW: 13 kDa

Product Name: Lymphotactin Rabbit Polyclonal Antibody
Catalog #: APRab00621

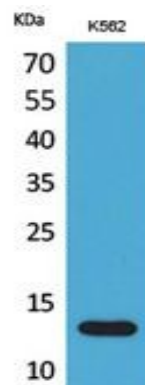
Background

Chemotactic activity for lymphocytes but not for monocytes or neutrophils. In thymus, mediates medullary accumulation of thymic dendritic cells and contributes to regulatory T cell development, playing a role in self-tolerance establishment.

Research Area

Immunology

Image Data



Western blot analysis of Lymphotactin in K562 lysates using Lymphotactin antibody.

Note

For research use only.