

Summary

Production Name	KIR2DL2/3 Rabbit Polyclonal Antibody
Description	Primary antibody
Host	Rabbit
Application	WB,ELISA
Reactivity	Human

Performance

Conjugation	Unconjugated
Modification	Unmodified
Isotype	IgG
Clonality	Polyclonal Antibody
Form	Liquid
Storage	Store at 4°C short term. Aliquot and store at -20°C long term. Avoid freeze/thaw cycles.
Buffer	Liquid in PBS containing 50% glycerol, 0.5% BSA and 0.02% sodium azide, pH 7.3.
Purification	Affinity Purified

Immunogen

Gene Name	KIR2DL3/KIR2DS2 KIR2DL3; CD158B2; KIRCL23; NKAT2; Killer cell immunoglobulin-like receptor 2DL3; CD158 antigen-like family member B2; KIR-023GB; Killer inhibitory receptor cl 2-3; MHC class I NK cell receptor; NKAT2a; NKAT2bNatural killer-associated transcript 2; NKAT-2;
Alternative Names	p58 natural killer cell receptor clone CL-6; p58 NK receptor CL-6; p58.2 MHC class-I-specific NK receptor; CD158b2; KIR2DS2; CD158J; NKAT5; Killer cell immunoglobulin-like receptor 2DS2
Gene ID	3804/100132285
SwissProt ID	P43628/P43631

Application

Dilution Ratio	WB: 1/500-1/1000 ELISA: 1/10000
-----------------------	---------------------------------

Product Name: KIR2DL2/3 Rabbit Polyclonal Antibody
Catalog #: APRab00620



Molecular Weight

Calculated MW: 38 kDa; Observed MW: 38 kDa

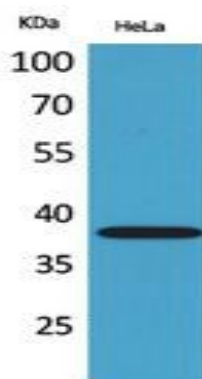
Background

Receptor on natural killer (NK) cells for HLA-C alleles (HLA-Cw1, HLA-Cw3 and HLA-Cw7). Inhibits the activity of NK cells thus preventing cell lysis.

Research Area

Immunology

Image Data



Western blot analysis of KIR2DL2/3 in HeLa lysates using KIR2DL2/3 antibody.

Note

For research use only.