

Product Name: CD1C Rabbit Polyclonal Antibody
Catalog #: APRab00613



Summary

Production Name	CD1C Rabbit Polyclonal Antibody
Description	Primary antibody
Host	Rabbit
Application	WB,ELISA
Reactivity	Human

Performance

Conjugation	Unconjugated
Modification	Unmodified
Isotype	IgG
Clonality	Polyclonal Antibody
Form	Liquid
Storage	Store at 4°C short term. Aliquot and store at -20°C long term. Avoid freeze/thaw cycles.
Buffer	Liquid in PBS containing 50% glycerol, 0.5% BSA and 0.02% sodium azide, pH 7.3.
Purification	Affinity Purified

Immunogen

Gene Name	CD1C
Alternative Names	CD1C; T-cell surface glycoprotein CD1c; CD1c
Gene ID	911
SwissProt ID	P29017

Application

Dilution Ratio	WB: 1/500-1/1000 ELISA: 1/10000
Molecular Weight	Calculated MW: 38 kDa; Observed MW: 38 kDa

Background

Antigen-presenting protein that binds self and non-self lipid and glycolipid antigens and presents them to T-cell receptors

Product Name: CD1C Rabbit Polyclonal Antibody
Catalog #: APRab00613

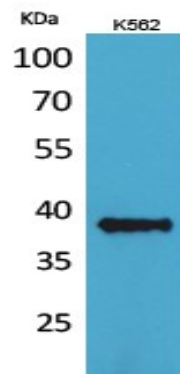


on natural killer T-cells.

Research Area

Immunology

Image Data



Western blot analysis of CD1C in K562 lysates using CD1C antibody.

Note

For research use only.