

Product Name: Synaptonemal Complex Protein 2 Rabbit Polyclonal Antibody
Catalog #: APRab00609

Summary

Production Name	Synaptonemal Complex Protein 2 Rabbit Polyclonal Antibody
Description	Primary antibody
Host	Rabbit
Application	WB,ELISA
Reactivity	Human

Performance

Conjugation	Unconjugated
Modification	Unmodified
Isotype	IgG
Clonality	Polyclonal Antibody
Form	Liquid
Storage	Store at 4°C short term. Aliquot and store at -20°C long term. Avoid freeze/thaw cycles.
Buffer	Liquid in PBS containing 50% glycerol, 0.5% BSA and 0.02% sodium azide, pH 7.3.
Purification	Affinity Purified

Immunogen

Gene Name	SYCP2
Alternative Names	SYCP2; SCP2; Synaptonemal complex protein 2; SCP-2; Synaptonemal complex lateral element protein; hsSCP2
Gene ID	10388
SwissProt ID	Q9BX26

Application

Dilution Ratio	WB: 1/500-1/1000 ELISA: 1/10000
Molecular Weight	Calculated MW: 176 kDa; Observed MW: 176 kDa

**Product Name: Synaptonemal Complex Protein 2 Rabbit
Polyclonal Antibody**
Catalog #: APRab00609



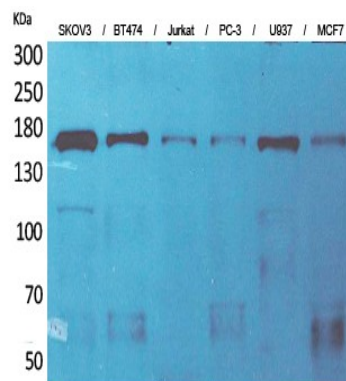
Background

Major component of the axial/lateral elements of synaptonemal complexes (SCS) during meiotic prophase.

Research Area

Cell Biology

Image Data



Western blot analysis of Synaptonemal Complex Protein 2 in SKOV-3, BT474, Jurkat, PC-3, U937, MCF-7 lysates using Synaptonemal Complex Protein 2 antibody.

Note

For research use only.