

Product Name: DNA Polymerase mu Rabbit Polyclonal Antibody
Catalog #: APRab00606



Summary

Production Name	DNA Polymerase mu Rabbit Polyclonal Antibody
Description	Primary antibody
Host	Rabbit
Application	WB,ELISA
Reactivity	Human

Performance

Conjugation	Unconjugated
Modification	Unmodified
Isotype	IgG
Clonality	Polyclonal Antibody
Form	Liquid
Storage	Store at 4°C short term. Aliquot and store at -20°C long term. Avoid freeze/thaw cycles.
Buffer	Liquid in PBS containing 50% glycerol, 0.5% BSA and 0.02% sodium azide, pH 7.3.
Purification	Affinity Purified

Immunogen

Gene Name	POLM
Alternative Names	POLM; polmu; DNA-directed DNA/RNA polymerase mu; Pol Mu; Terminal transferase
Gene ID	27434
SwissProt ID	Q9NP87

Application

Dilution Ratio	WB: 1/500-1/1000 ELISA: 1/10000
Molecular Weight	Calculated MW: 55 kDa; Observed MW: 55 kDa

Background

Product Name: DNA Polymerase mu Rabbit Polyclonal Antibody
Catalog #: APRab00606

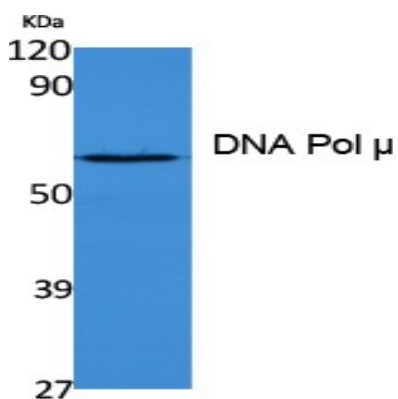


Gap-filling polymerase involved in repair of DNA double-strand breaks by non-homologous end joining (NHEJ).

Research Area

Epigenetics and Nuclear Signaling

Image Data



Western blot analysis of DNA Polymerase mu in K562 lysates using DNA Pol μ antibody.

Note

For research use only.