

Summary

Production Name	RASSF8 Rabbit Polyclonal Antibody
Description	Primary antibody
Host	Rabbit
Application	WB,ELISA
Reactivity	Human,Rat

Performance

Conjugation	Unconjugated
Modification	Unmodified
Isotype	IgG
Clonality	Polyclonal Antibody
Form	Liquid
Storage	Store at 4°C short term. Aliquot and store at -20°C long term. Avoid freeze/thaw cycles.
Buffer	Liquid in PBS containing 50% glycerol, 0.5% BSA and 0.02% sodium azide, pH 7.3.
Purification	Affinity Purified

Immunogen

Gene Name	RASSF8
Alternative Names	RASSF8; C12orf2; Ras association domain-containing protein 8; Carcinoma-associated protein HOJ-1
Gene ID	11228
SwissProt ID	Q8NHQ8

Application

Dilution Ratio	WB: 1/500-1/1000 ELISA: 1/10000
Molecular Weight	Calculated MW: 48 kDa; Observed MW: 48 kDa

Background

Product Name: RASSF8 Rabbit Polyclonal Antibody
Catalog #: APRab00604

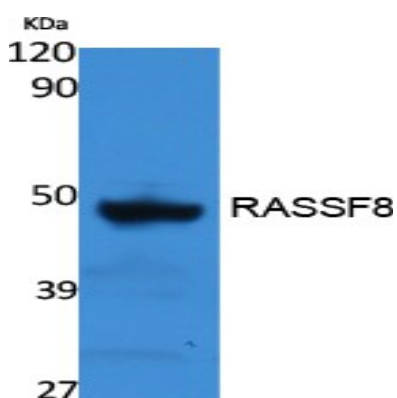


This gene encodes a member of the Ras-association domain family (RASSF) of tumor suppressor proteins. This gene is essential for maintaining adherens junction function in epithelial cells and has a role in epithelial cell migration. It is a lung tumor suppressor gene candidate.

Research Area

Signal Transduction

Image Data



Western blot analysis of RASSF8 in rat stomach lysates using RASSF8 antibody.

Note

For research use only.