

## Summary

<b>Production Name</b>	beta 3 Gal T1 Rabbit Polyclonal Antibody
<b>Description</b>	Primary antibody
<b>Host</b>	Rabbit
<b>Application</b>	WB,ELISA
<b>Reactivity</b>	Human,Mouse

## Performance

<b>Conjugation</b>	Unconjugated
<b>Modification</b>	Unmodified
<b>Isotype</b>	IgG
<b>Clonality</b>	Polyclonal Antibody
<b>Form</b>	Liquid
<b>Storage</b>	Store at 4°C short term. Aliquot and store at -20°C long term. Avoid freeze/thaw cycles.
<b>Buffer</b>	Liquid in PBS containing 50% glycerol, 0.5% BSA and 0.02% sodium azide, pH 7.3.
<b>Purification</b>	Affinity Purified

## Immunogen

<b>Gene Name</b>	B3GALT1 B3GALT1; Beta-1; 3-galactosyltransferase 1; Beta-1; 3-GalTase 1; Beta3Gal-T1;
<b>Alternative Names</b>	Beta3GalT1; UDP-galactose:beta-N-acetyl-glucosamine-beta-1; 3-galactosyltransferase 1
<b>Gene ID</b>	8708
<b>SwissProt ID</b>	Q9Y5Z6

## Application

<b>Dilution Ratio</b>	WB: 1/500-1/1000 ELISA: 1/10000
<b>Molecular Weight</b>	Calculated MW: 38 kDa; Observed MW: 38 kDa

**Product Name: beta 3 Gal T1 Rabbit Polyclonal Antibody**  
**Catalog #: APRab00595**



---

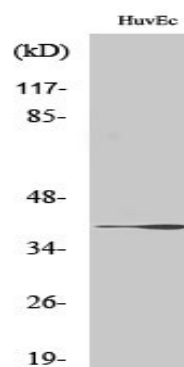
## Background

Beta-1,3-galactosyltransferase that transfers galactose from UDP-alpha-D-galactose to substrates with a terminal beta-N-acetylglucosamine (beta-GlcNAc) residue.

## Research Area

-

## Image Data



Western blot analysis of beta 3 Gal T1 in various lysates using beta 3 Gal T1 antibody.

## Note

For research use only.