

Summary

Production Name	CD1a/b Rabbit Polyclonal Antibody
Description	Primary antibody
Host	Rabbit
Application	IHC-P,ELISA
Reactivity	Human

Performance

Conjugation	Unconjugated
Modification	Unmodified
Isotype	IgG
Clonality	Polyclonal Antibody
Form	Liquid
Storage	Store at 4°C short term. Aliquot and store at -20°C long term. Avoid freeze/thaw cycles.
Buffer	Liquid in PBS containing 50% glycerol, 0.5% BSA and 0.02% sodium azide, pH 7.3.
Purification	Affinity Purified

Immunogen

Gene Name	CD1A/CD1B
Alternative Names	T-cell surface antigen T6/Leu-6; hTa1 thymocyte antigen; CD antigen CD1a; CD antigen CD1b
Gene ID	909/910
SwissProt ID	P06126/P29016

Application

Dilution Ratio	IHC: 1/50-1/100 ELISA: 1/10000
Molecular Weight	-

Background

Product Name: CD1a/b Rabbit Polyclonal Antibody
Catalog #: APRab00585

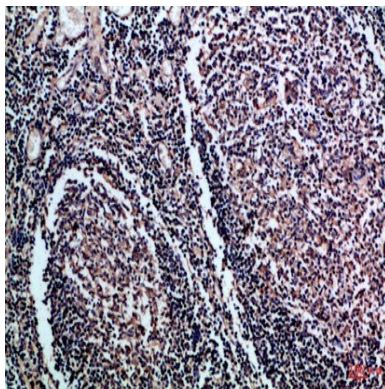


Antigen-presenting protein that binds self and non-self lipid and glycolipid antigens and presents them to T-cell receptors on natural killer T-cells.

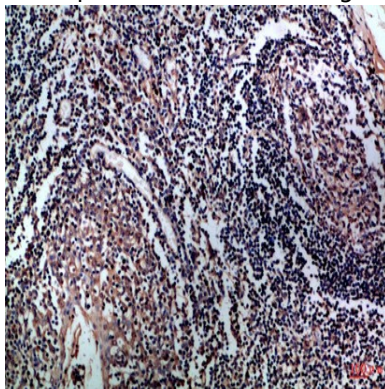
Research Area

Immunology

Image Data



Immunohistochemistry analysis of paraffin-embedded Human tonsil using CD1a/b antibody. High-pressure and temperature Sodium Citrate pH 6.0 was used for antigen retrieval.



Immunohistochemical analysis of paraffin-embedded Human tonsils using CD1a/b antibody. High-pressure and temperature Sodium Citrate pH 6.0 was used for antigen retrieval.

Note

For research use only.