

Summary

Production Name	CD300b Rabbit Polyclonal Antibody
Description	Primary antibody
Host	Rabbit
Application	IHC-P,ELISA
Reactivity	Human

Performance

Conjugation	Unconjugated
Modification	Unmodified
Isotype	IgG
Clonality	Polyclonal Antibody
Form	Liquid
Storage	Store at 4°C short term. Aliquot and store at -20°C long term. Avoid freeze/thaw cycles.
Buffer	Liquid in PBS containing 50% glycerol, 0.5% BSA and 0.02% sodium azide, pH 7.3.
Purification	Affinity Purified

Immunogen

Gene Name	CD300LB CMRF35-like molecule 7; CLM-7; CD300 antigen-like family member B; CMRF35-A2;
Alternative Names	Immune receptor expressed on myeloid cells 3; IREM-3; Leukocyte mono-Ig-like receptor 5; Triggering receptor expressed on myeloid cells 5; TREM-5; CD antigen CD300b
Gene ID	124599
SwissProt ID	A8K4G0

Application

Dilution Ratio	IHC: 1/50-1/100 ELISA: 1/10000
Molecular Weight	-

Product Name: CD300b Rabbit Polyclonal Antibody
Catalog #: APRab00579



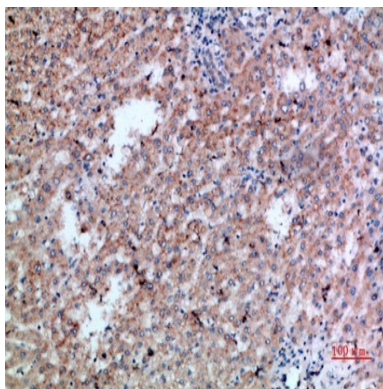
Background

Acts as an activating immune receptor through its interaction with ITAM-bearing adapter TYROBP, and also independently by recruitment of GRB2.

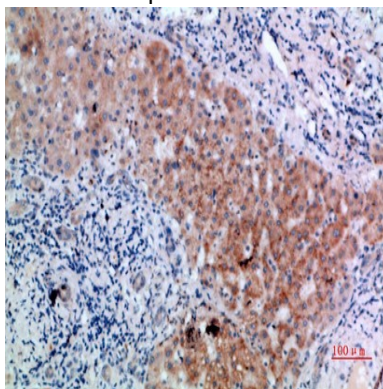
Research Area

Immunology

Image Data



Immunohistochemistry analysis of paraffin-embedded Human livercancer using CD300b antibody.High-pressure and temperature Sodium Citrate pH 6.0 was used for antigen retrieval.



Immunohistochemical analysis of paraffin-embedded Human tonsils using CD300b antibody.High-pressure and temperature Sodium Citrate pH 6.0 was used for antigen retrieval.

Note

For research use only.