

Summary

Production Name	CKR 1 Rabbit Polyclonal Antibody
Description	Primary antibody
Host	Rabbit
Application	IHC-P,ELISA
Reactivity	Human

Performance

Conjugation	Unconjugated
Modification	Unmodified
Isotype	IgG
Clonality	Polyclonal Antibody
Form	Liquid
Storage	Store at 4°C short term. Aliquot and store at -20°C long term. Avoid freeze/thaw cycles.
Buffer	Liquid in PBS containing 50% glycerol, 0.5% BSA and 0.02% sodium azide, pH 7.3.
Purification	Affinity Purified

Immunogen

Gene Name	CCR1
Alternative Names	C-C motif chemokine receptor 1; CKR1; CD191; CKR-1; HM145; CMKBR1; MIP1aR; SCYAR1
Gene ID	1230
SwissProt ID	P32246

Application

Dilution Ratio	IHC: 1/50-1/100 ELISA: 1/10000
Molecular Weight	-

Background

Product Name: CKR 1 Rabbit Polyclonal Antibody
Catalog #: APRab00578

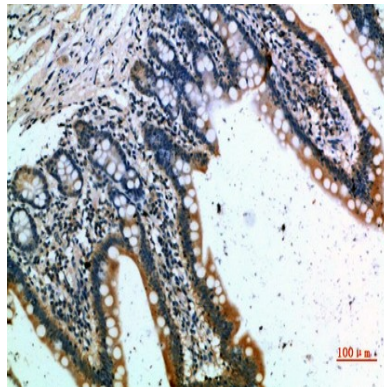


Receptor for a C-C type chemokine.

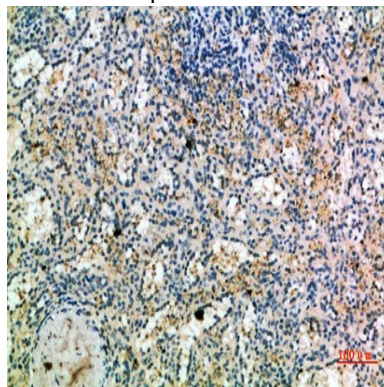
Research Area

Immunology

Image Data



Immunohistochemistry analysis of paraffin-embedded Human small intestine using CKR 1 antibody. High-pressure and temperature Sodium Citrate pH 6.0 was used for antigen retrieval.



Immunohistochemical analysis of paraffin-embedded Human tonsils using CKR 1 antibody. High-pressure and temperature Sodium Citrate pH 6.0 was used for antigen retrieval.

Note

For research use only.