

Summary

Production Name	MRPL35 Rabbit Polyclonal Antibody
Description	Primary antibody
Host	Rabbit
Application	WB,ELISA
Reactivity	Human,Mouse

Performance

Conjugation	Unconjugated
Modification	Unmodified
Isotype	IgG
Clonality	Polyclonal Antibody
Form	Liquid
Storage	Store at 4°C short term. Aliquot and store at -20°C long term. Avoid freeze/thaw cycles.
Buffer	Liquid in PBS containing 50% glycerol, 0.5% BSA and 0.02% sodium azide, pH 7.3.
Purification	Affinity Purified

Immunogen

Gene Name	MRPL35
Alternative Names	MRPL35; BM-007; 39S ribosomal protein L35; mitochondrial; L35mt; MRP-L35
Gene ID	51318
SwissProt ID	Q9NZE8

Application

Dilution Ratio	WB: 1/500-1/1000 ELISA: 1/10000
Molecular Weight	Calculated MW: 22 kDa; Observed MW: 22 kDa

Background

Mammalian mitochondrial ribosomal proteins are encoded by nuclear genes and help in protein synthesis within the

Product Name: MRPL35 Rabbit Polyclonal Antibody
Catalog #: APRab00574

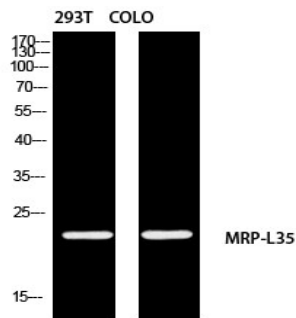


mitochondrion. Mitochondrial ribosomes (mitoribosomes) consist of a small 28S subunit and a large 39S subunit.

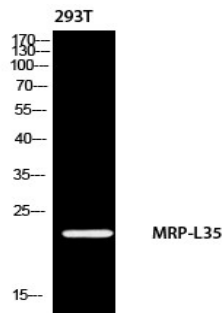
Research Area

Tags & Cell Markers

Image Data



Western blot analysis of MRPL35 in 293T , COLO lysates using MRPL35 antibody.



Western blot analysis of MRPL35 in 293 lysates using MRPL35 antibody.

Note

For research use only.