

Summary

Production Name	CCL4L Rabbit Polyclonal Antibody
Description	Primary antibody
Host	Rabbit
Application	WB,ELISA
Reactivity	Human

Performance

Conjugation	Unconjugated
Modification	Unmodified
Isotype	IgG
Clonality	Polyclonal Antibody
Form	Liquid
Storage	Store at 4°C short term. Aliquot and store at -20°C long term. Avoid freeze/thaw cycles.
Buffer	Liquid in PBS containing 50% glycerol, 0.5% BSA and 0.02% sodium azide, pH 7.3.
Purification	Affinity Purified

Immunogen

Gene Name	CCL4L1
Alternative Names	CCL4L1; CCL4L; LAG1; SCYA4L1; CCL4L2; CCL4L; SCYA4L2; C-C motif chemokine 4-like; Lymphocyte activation gene 1 protein; LAG-1; Macrophage inflammatory protein 1-beta; MIP-1-beta; Monocyte adherence-induced protein 5-alpha; Small-inducible cytokine A4-like
Gene ID	388372
SwissProt ID	Q8NHW4

Application

Dilution Ratio	WB: 1/500-1/1000 ELISA: 1/10000
Molecular Weight	Calculated MW: 10 kDa; Observed MW: 10 kDa

Product Name: CCL4L Rabbit Polyclonal Antibody
Catalog #: APRab00571



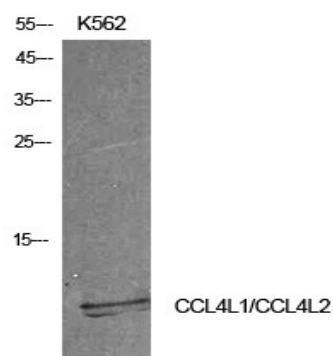
Background

Chemokine that induces chemotaxis of cells expressing CCR5 or CCR1.

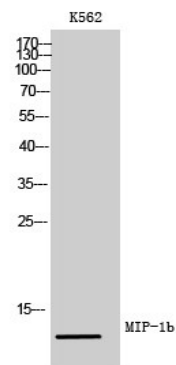
Research Area

Immunology

Image Data



Western blot analysis of CCL4L in K562 lysates using CCL4L antibody.



Western blot analysis of CCL4L in K562 lysates using MIP1b antibody.

Note

For research use only.