

Summary

Production Name	Syndecan 1 Rabbit Polyclonal Antibody
Description	Primary antibody
Host	Rabbit
Application	WB,IHC-P,ELISA
Reactivity	Human

Performance

Conjugation	Unconjugated
Modification	Unmodified
Isotype	IgG
Clonality	Polyclonal Antibody
Form	Liquid
Storage	Store at 4°C short term. Aliquot and store at -20°C long term. Avoid freeze/thaw cycles.
Buffer	Liquid in PBS containing 50% glycerol, 0.5% BSA and 0.02% sodium azide, pH 7.3.
Purification	Affinity Purified

Immunogen

Gene Name	SDC1
Alternative Names	SDC1; SDC; Syndecan-1; SYND1; CD138
Gene ID	6382
SwissProt ID	P18827

Application

Dilution Ratio	WB: 1/500-1/1000 IHC: 1/50-1/100 ELISA: 1/10000
Molecular Weight	Calculated MW: 32 kDa; Observed MW: 32 kDa

Background

Cell surface proteoglycan that bears both heparan sulfate and chondroitin sulfate and that links the cytoskeleton to the

Product Name: Syndecan 1 Rabbit Polyclonal Antibody
Catalog #: APRab00566

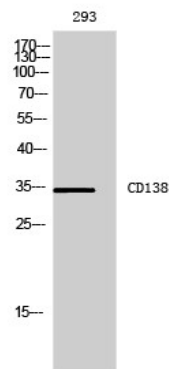


interstitial matrix.

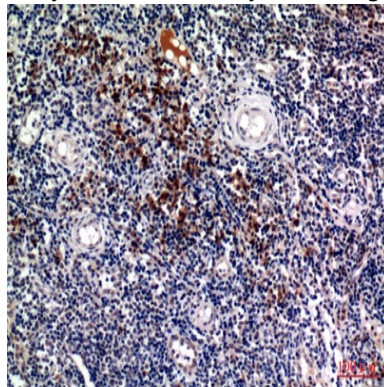
Research Area

Cell Biology

Image Data



Western blot analysis of Syndecan 1 in 293 lysates using Syndecan 1 antibody.



Immunohistochemistry analysis of paraffin-embedded Human tonsils using Syndecan 1 antibody. High-pressure and temperature Sodium Citrate pH 6.0 was used for antigen retrieval.

Note

For research use only.