

Summary

Production Name	CD159a/c Rabbit Polyclonal Antibody
Description	Primary antibody
Host	Rabbit
Application	WB,IHC-P,ELISA
Reactivity	Human

Performance

Conjugation	Unconjugated
Modification	Unmodified
Isotype	IgG
Clonality	Polyclonal Antibody
Form	Liquid
Storage	Store at 4°C short term. Aliquot and store at -20°C long term. Avoid freeze/thaw cycles.
Buffer	Liquid in PBS containing 50% glycerol, 0.5% BSA and 0.02% sodium azide, pH 7.3.
Purification	Affinity Purified

Immunogen

Gene Name	KLRC1 KLRC1; NKG2A; NKG2-A/NKG2-B type II integral membrane protein; CD159 antigen-like family member A; NK cell receptor A; NKG2-A/B-activating NK receptor; CD159a;
Alternative Names	KLRC2; NKG2C; NKG2-C type II integral membrane protein; CD159 antigen-like family member C; NK cell receptor C; NKG2-C-activating NK receptor; CD159c; KLRC3; NKG2E; NKG2-E type II integral membrane protein; NK cell receptor E; NKG2-E-activating NK receptor
Gene ID	3821
SwissProt ID	P26715

Application

Dilution Ratio	WB: 1/500-1/1000 IHC: 1/50-1/100 ELISA: 1/10000
-----------------------	---

Product Name: CD159a/c Rabbit Polyclonal Antibody
Catalog #: APRab00557



Molecular Weight

Calculated MW: 26 kDa; Observed MW: 26 kDa

Background

Immune inhibitory receptor involved in self-nonsel self discrimination.

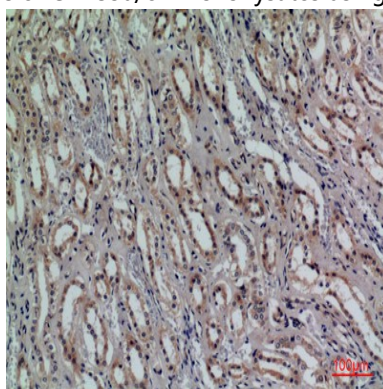
Research Area

Immunology

Image Data



Western blot analysis of CD159a/c in L929 lysates using CD159a/c antibody.



Immunohistochemistry analysis of paraffin-embedded Human kidney using CD159a/c antibody. High-pressure and temperature Sodium Citrate pH 6.0 was used for antigen retrieval.

Note

For research use only.