

---

## Summary

|                        |                                   |
|------------------------|-----------------------------------|
| <b>Production Name</b> | MYH6/7 Rabbit Polyclonal Antibody |
| <b>Description</b>     | Primary antibody                  |
| <b>Host</b>            | Rabbit                            |
| <b>Application</b>     | IHC-P,ELISA                       |
| <b>Reactivity</b>      | Human,Mouse,Rat                   |

## Performance

|                     |  |
|---------------------|--|
| <b>Conjugation</b>  | Unconjugated   |
| <b>Modification</b> | Unmodified   |
| <b>Isotype</b>      | IgG  |
| <b>Clonality</b>    | Polyclonal Antibody  |
| <b>Form</b>         | Liquid   |
| <b>Storage</b>      | Store at 4°C short term. Aliquot and store at -20°C long term. Avoid freeze/thaw cycles. |
| <b>Buffer</b>       | Liquid in PBS containing 50% glycerol, 0.5% BSA and 0.02% sodium azide, pH 7.3.          |
| <b>Purification</b> | Affinity Purified  |

## Immunogen

|                          |   |
|--------------------------|---|
| <b>Gene Name</b>         | MYH6/7  |
| <b>Alternative Names</b> | Myosin heavy chain 6; Myosin heavy chain; cardiac muscle alpha isoform; MyHC-alpha;<br>Myosin heavy chain 7; MyHC-slow; MyHC-beta |
| <b>Gene ID</b>           | 4624/4625   |
| <b>SwissProt ID</b>      | P13533/P12883   |

## Application

|                         |                                |
|-------------------------|--------------------------------|
| <b>Dilution Ratio</b>   | IHC: 1/50-1/100 ELISA: 1/10000 |
| <b>Molecular Weight</b> | -                              |

## Background

---

**Product Name: MYH6/7 Rabbit Polyclonal Antibody**  
**Catalog #: APRab00541**

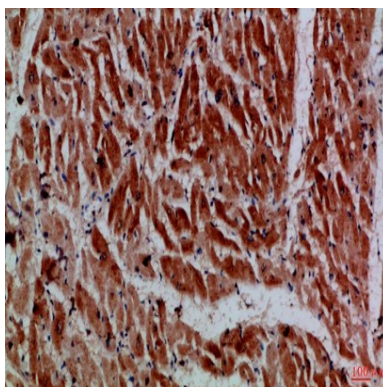


Muscle contraction.

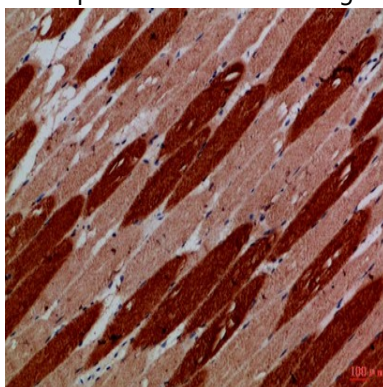
## Research Area

Signal Transduction

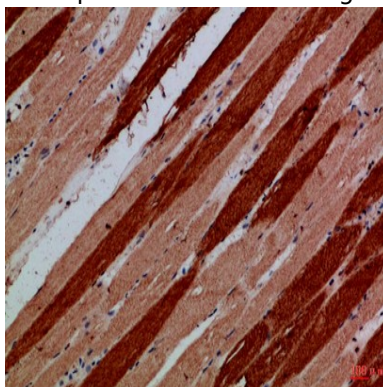
## Image Data



Immunohistochemistry analysis of paraffin-embedded Human heart using MYH6/7 antibody. High-pressure and temperature Sodium Citrate pH 6.0 was used for antigen retrieval.



Immunohistochemical analysis of paraffin-embedded Human tonsils using MYH6/7 antibody. High-pressure and temperature Sodium Citrate pH 6.0 was used for antigen retrieval.



Immunohistochemistry analysis of paraffin-embedded Human skeletal muscle using MYH6/7 antibody. High-pressure and

**Product Name: MYH6/7 Rabbit Polyclonal Antibody**  
**Catalog #: APRab00541**



---

temperature Sodium Citrate pH 6.0 was used for antigen retrieval.

**Note**

For research use only.