

---

## Summary

<b>Production Name</b>	IL-15 Rabbit Polyclonal Antibody
<b>Description</b>	Primary antibody
<b>Host</b>	Rabbit
<b>Application</b>	IHC-P,ELISA
<b>Reactivity</b>	Human

## Performance

<b>Conjugation</b>	Unconjugated
<b>Modification</b>	Unmodified
<b>Isotype</b>	IgG
<b>Clonality</b>	Polyclonal Antibody
<b>Form</b>	Liquid
<b>Storage</b>	Store at 4°C short term. Aliquot and store at -20°C long term. Avoid freeze/thaw cycles.
<b>Buffer</b>	Liquid in PBS containing 50% glycerol, 0.5% BSA and 0.02% sodium azide, pH 7.3.
<b>Purification</b>	Affinity Purified

## Immunogen

<b>Gene Name</b>	IL15
<b>Alternative Names</b>	Interleukin-15 (IL-15)
<b>Gene ID</b>	3600
<b>SwissProt ID</b>	P40933

## Application

<b>Dilution Ratio</b>	IHC: 1/50-1/100 ELISA: 1/10000
<b>Molecular Weight</b>	-

## Background

The protein encoded by this gene is a cytokine that regulates T and natural killer cell activation and proliferation. This

**Product Name: IL-15 Rabbit Polyclonal Antibody**  
**Catalog #: APRab00540**

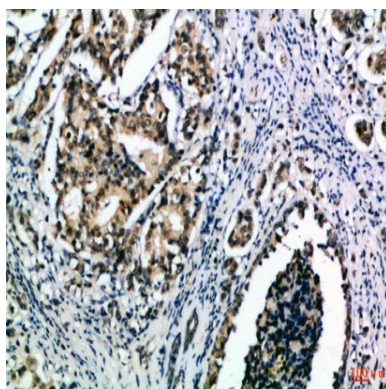


cytokine and interleukine 2 share many biological activities. They are found to bind common hematopoietin receptor subunits, and may compete for the same receptor, and thus negatively regulate each other's activity. The number of CD8+ memory cells is shown to be controlled by a balance between this cytokine and IL2. This cytokine induces the activation of JAK kinases, as well as the phosphorylation and activation of transcription activators STAT3, STAT5, and STAT6. Studies of the mouse counterpart suggested that this cytokine may increase the expression of apoptosis inhibitor BCL2L1/BCL-x(L), possibly through the transcription activation activity of STAT6, and thus prevent apoptosis. Alternatively spliced transcript variants of this gene have been reported.

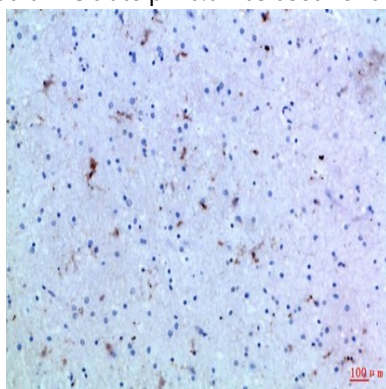
## Research Area

Immunology

## Image Data

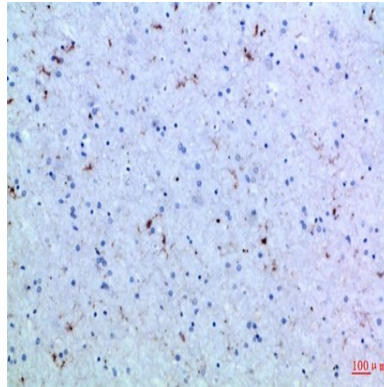


Immunohistochemistry analysis of paraffin-embedded Human breastcancer using IL-15 antibody.High-pressure and temperature Sodium Citrate pH 6.0 was used for antigen retrieval.



Immunohistochemical analysis of paraffin-embedded Human tonsils using IL-15 antibody.High-pressure and temperature Sodium Citrate pH 6.0 was used for antigen retrieval.

**Product Name: IL-15 Rabbit Polyclonal Antibody**  
**Catalog #: APRab00540**



Immunohistochemistry analysis of paraffin-embedded Human brain using IL-15 antibody. High-pressure and temperature Sodium Citrate pH 6.0 was used for antigen retrieval.

**Note**

For research use only.