

Product Name: IL-18 Receptor Accessory Protein Rabbit Polyclonal Antibody
Catalog #: APRab00537



Summary

Production Name	IL-18 Receptor Accessory Protein Rabbit Polyclonal Antibody
Description	Primary antibody
Host	Rabbit
Application	IHC-P,ELISA
Reactivity	Human

Performance

Conjugation	Unconjugated
Modification	Unmodified
Isotype	IgG
Clonality	Polyclonal Antibody
Form	Liquid
Storage	Store at 4°C short term. Aliquot and store at -20°C long term. Avoid freeze/thaw cycles.
Buffer	Liquid in PBS containing 50% glycerol, 0.5% BSA and 0.02% sodium azide, pH 7.3.
Purification	Affinity Purified

Immunogen

Gene Name	IL18RAP
Alternative Names	IL-18 Receptor Accessory Protein; ACPL; CD218b; IL18RB; CDw218b
Gene ID	8807
SwissProt ID	O95256

Application

Dilution Ratio	IHC: 1/50-1/100 ELISA: 1/10000
Molecular Weight	-

Background

**Product Name: IL-18 Receptor Accessory Protein Rabbit
Polyclonal Antibody
Catalog #: APRab00537**

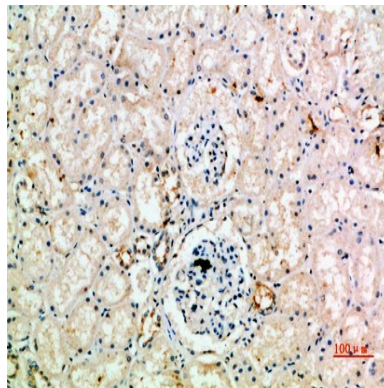


Interleukin 18 receptor accessory protein, also known as IL18RAP and CDw218b (cluster of differentiationw218b), is a human gene. The protein encoded by this gene is an accessory subunit of the heterodimeric receptor for IL18. This protein enhances the IL18 binding activity of IL18R1 (IL1RRP), a ligand binding subunit of IL18 receptor. The coexpression of IL18R1 and this protein is required for the activation of NF- κ B and MAPK8 (JNK) in response to IL18.

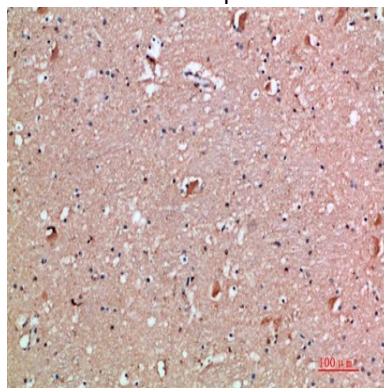
Research Area

Immunology

Image Data

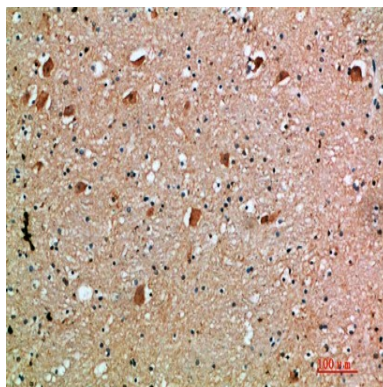


Immunohistochemistry analysis of paraffin-embedded Human kidney using IL-18 Receptor Accessory Protein antibody. High-pressure and temperature Sodium Citrate pH 6.0 was used for antigen retrieval.



Immunohistochemical analysis of paraffin-embedded Human tonsils using IL-18 Receptor Accessory Protein antibody. High-pressure and temperature Sodium Citrate pH 6.0 was used for antigen retrieval.

**Product Name: IL-18 Receptor Accessory Protein Rabbit
Polyclonal Antibody
Catalog #: APRab00537**



Immunohistochemistry analysis of paraffin-embedded Human brain using IL-18 Receptor Accessory Protein antibody. High-pressure and temperature Sodium Citrate pH 6.0 was used for antigen retrieval.

Note

For research use only.