

Summary

Production Name	CD16 Rabbit Polyclonal Antibody
Description	Primary antibody
Host	Rabbit
Application	IHC-P,ELISA
Reactivity	Human

Performance

Conjugation	Unconjugated
Modification	Unmodified
Isotype	IgG
Clonality	Polyclonal Antibody
Form	Liquid
Storage	Store at 4°C short term. Aliquot and store at -20°C long term. Avoid freeze/thaw cycles.
Buffer	Liquid in PBS containing 50% glycerol, 0.5% BSA and 0.02% sodium azide, pH 7.3.
Purification	Affinity Purified

Immunogen

Gene Name	FCGR3A/FCGR3B
Alternative Names	CD16A; FCG3; FCGR3; IGFR3; CD16B; FCG3; FCGR3; IGFR3
Gene ID	2214/2215
SwissProt ID	P08637/O75015

Application

Dilution Ratio	IHC: 1/50-1/100 ELISA: 1/10000
Molecular Weight	-

Background

Receptor for the Fc region of IgG. Binds complexed or aggregated IgG and also monomeric IgG. Mediates antibody-

Product Name: CD16 Rabbit Polyclonal Antibody
Catalog #: APRab00536

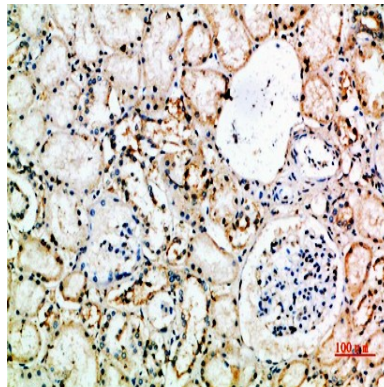


dependent cellular cytotoxicity (ADCC) and other antibody-dependent responses, such as phagocytosis.

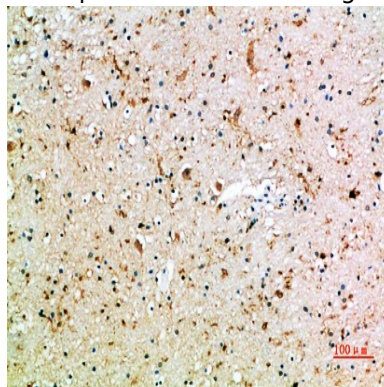
Research Area

Immunology

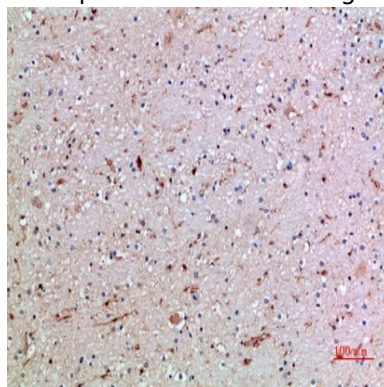
Image Data



Immunohistochemistry analysis of paraffin-embedded Human kidney using CD16 antibody. High-pressure and temperature Sodium Citrate pH 6.0 was used for antigen retrieval.



Immunohistochemical analysis of paraffin-embedded Human tonsils using CD16 antibody. High-pressure and temperature Sodium Citrate pH 6.0 was used for antigen retrieval.



Immunohistochemistry analysis of paraffin-embedded Human brain using CD16 antibody. High-pressure and temperature

Product Name: CD16 Rabbit Polyclonal Antibody
Catalog #: APRab00536



Sodium Citrate pH 6.0 was used for antigen retrieval.

Note

For research use only.