

Product Name: GDF6 Rabbit Polyclonal Antibody
Catalog #: APRab00530



Summary

Production Name	GDF6 Rabbit Polyclonal Antibody
Description	Primary antibody
Host	Rabbit
Application	WB,ELISA
Reactivity	Human,Mouse,Rat

Performance

Conjugation	Unconjugated
Modification	Unmodified
Isotype	IgG
Clonality	Polyclonal Antibody
Form	Liquid
Storage	Store at 4°C short term. Aliquot and store at -20°C long term. Avoid freeze/thaw cycles.
Buffer	Liquid in PBS containing 50% glycerol, 0.5% BSA and 0.02% sodium azide, pH 7.3.
Purification	Affinity Purified

Immunogen

Gene Name	GDF6
Alternative Names	GDF6; GDF16; Growth/differentiation factor 6; GDF-6; Growth/differentiation factor 16
Gene ID	392255
SwissProt ID	Q6KF10

Application

Dilution Ratio	WB: 1/500-1/1000 ELISA: 1/10000
Molecular Weight	Calculated MW: 51 kDa; Observed MW: 51 kDa

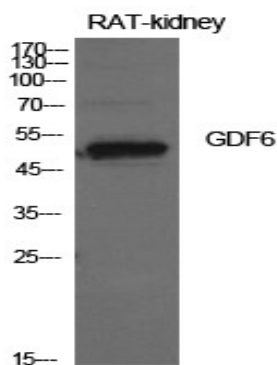
Background

Growth factor that controls proliferation and cellular differentiation in the retina and bone formation.

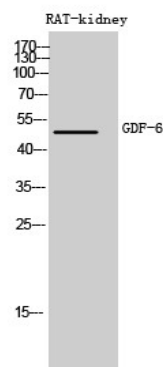
Research Area

Signal Transduction

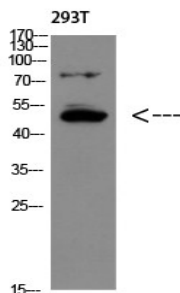
Image Data



Western blot analysis of GDF6 in rat kidney lysates using GDF6 antibody.



Western blot analysis of GDF6 in rat kidney lysates using GDF6 antibody.



Western blot analysis of GDF6 in 293T lysates using GDF6 antibody.

Note

Product Name: GDF6 Rabbit Polyclonal Antibody
Catalog #: APRab00530



For research use only.