

**Product Name: Prostate Specific Antigen Rabbit
Polyclonal Antibody
Catalog #: APRab00528**

Summary

Production Name	Prostate Specific Antigen Rabbit Polyclonal Antibody
Description	Primary antibody
Host	Rabbit
Application	WB,IHC-P,ELISA
Reactivity	Human

Performance

Conjugation	Unconjugated
Modification	Unmodified
Isotype	IgG
Clonality	Polyclonal Antibody
Form	Liquid
Storage	Store at 4°C short term. Aliquot and store at -20°C long term. Avoid freeze/thaw cycles.
Buffer	Liquid in PBS containing 50% glycerol, 0.5% BSA and 0.02% sodium azide, pH 7.3.
Purification	Affinity Purified

Immunogen

Gene Name	KLK3
Alternative Names	KLK3; APS; Prostate-specific antigen; PSA; Gamma-seminoprotein; Semin; Kallikrein-3; P-30 antigen; Semenogelase
Gene ID	354
SwissProt ID	P07288

Application

Dilution Ratio	WB: 1/500-1/1000 IHC: 1/50-1/100 ELISA: 1/10000
Molecular Weight	Calculated MW: 29 kDa; Observed MW: 29 kDa

Product Name: Prostate Specific Antigen Rabbit Polyclonal Antibody
Catalog #: APRab00528

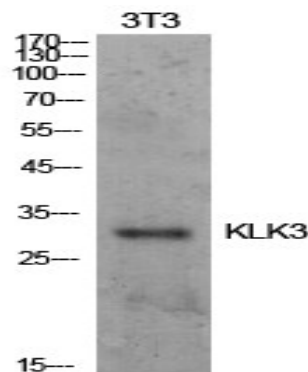
Background

PSA/KLK3 is a member of the glandular kallikrein subfamily of serine proteases. Upon cleavage of 7 amino-terminal amino acids, it is activated to liquefy semen in the seminal coagulum. Although PSA/KLK3 is produced in healthy individuals, investigators have found abnormally high levels in the blood of men with advanced prostate cancer.

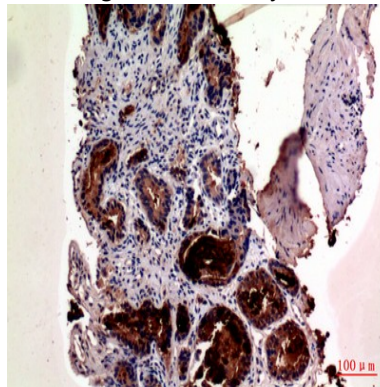
Research Area

Neuroscience

Image Data

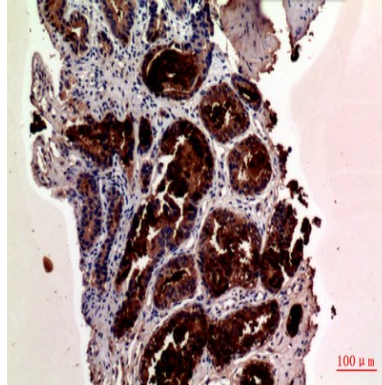


Western blot analysis of Prostate Specific Antigen in NIH3T3 lysates using Prostate Specific Antigen antibody.



Immunohistochemistry analysis of paraffin-embedded Human prostate cancer using Prostate Specific Antigen antibody. High-pressure and temperature Sodium Citrate pH 6.0 was used for antigen retrieval.

**Product Name: Prostate Specific Antigen Rabbit
Polyclonal Antibody
Catalog #: APRab00528**



Immunohistochemistry analysis of paraffin-embedded Human prostate cancer using Prostate Specific Antigen antibody.
High-pressure and temperature Sodium Citrate pH 6.0 was used for antigen retrieval.

Note

For research use only.