

Summary

Production Name	IL-36 beta Rabbit Polyclonal Antibody
Description	Primary antibody
Host	Rabbit
Application	WB,IHC-P,ELISA
Reactivity	Human

Performance

Conjugation	Unconjugated
Modification	Unmodified
Isotype	IgG
Clonality	Polyclonal Antibody
Form	Liquid
Storage	Store at 4°C short term. Aliquot and store at -20°C long term. Avoid freeze/thaw cycles.
Buffer	Liquid in PBS containing 50% glycerol, 0.5% BSA and 0.02% sodium azide, pH 7.3.
Purification	Affinity Purified

Immunogen

Gene Name	IL36B
Alternative Names	IL-36 beta; IL36B; IL1F8; IL1H2; Interleukin-36 beta; FIL1 eta; Interleukin-1 eta; IL-1 eta; Interleukin-1 family member 8; IL-1F8; Interleukin-1 homolog 2; IL-1H2
Gene ID	27177
SwissProt ID	Q9NZH7

Application

Dilution Ratio	WB: 1/500-1/1000 IHC: 1/50-1/100 ELISA: 1/10000
Molecular Weight	Calculated MW: 19 kDa; Observed MW: 19 kDa

Background

Product Name: IL-36 beta Rabbit Polyclonal Antibody
Catalog #: APRab00526

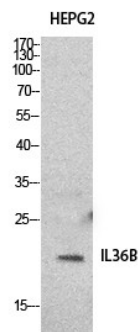


Cytokine that binds to and signals through the IL1RL2/IL-36R receptor which in turn activates NF-kappa-B and MAPK signaling pathways in target cells linked to a pro-inflammatory response.

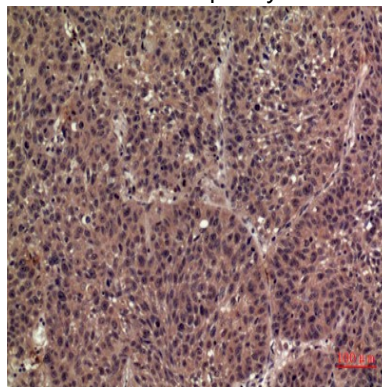
Research Area

Immunology

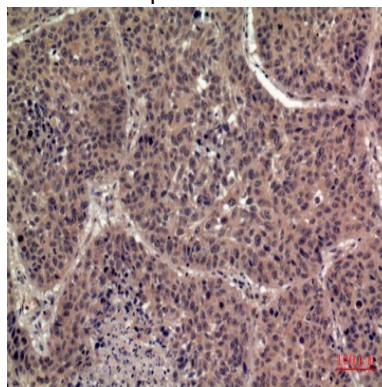
Image Data



Western blot analysis of IL-36 beta in HepG2 lysates using IL-36 beta antibody.



Immunohistochemistry analysis of paraffin-embedded Human lung using IL-36 beta antibody. High-pressure and temperature Sodium Citrate pH 6.0 was used for antigen retrieval.



Immunohistochemistry analysis of paraffin-embedded Human lung using IL-36 beta antibody. High-pressure and

Product Name: IL-36 beta Rabbit Polyclonal Antibody
Catalog #: APRab00526



temperature Sodium Citrate pH 6.0 was used for antigen retrieval.

Note

For research use only.