

Product Name: Integrin alpha 4 Rabbit Polyclonal Antibody
Catalog #: APRab00523

Summary

Production Name	Integrin alpha 4 Rabbit Polyclonal Antibody
Description	Primary antibody
Host	Rabbit
Application	WB,IHC-P,ELISA
Reactivity	Human

Performance

Conjugation	Unconjugated
Modification	Unmodified
Isotype	IgG
Clonality	Polyclonal Antibody
Form	Liquid
Storage	Store at 4°C short term. Aliquot and store at -20°C long term. Avoid freeze/thaw cycles.
Buffer	Liquid in PBS containing 50% glycerol, 0.5% BSA and 0.02% sodium azide, pH 7.3.
Purification	Affinity Purified

Immunogen

Gene Name	ITGAD
Alternative Names	ITGAD; Integrin alpha-D; ADB2; CD11 antigen-like family member D; Leukointegrin alpha D; CD11d
Gene ID	3681
SwissProt ID	Q13349

Application

Dilution Ratio	WB: 1/500-1/1000 IHC: 1/50-1/100 ELISA: 1/10000
Molecular Weight	Calculated MW: 127 kDa; Observed MW: 127 kDa

Product Name: Integrin alpha 4 Rabbit Polyclonal Antibody
Catalog #: APRab00523

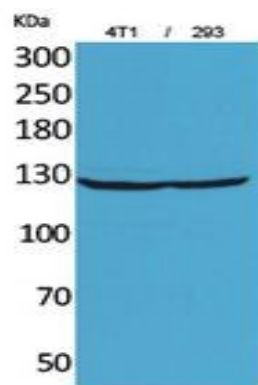
Background

Integrin alpha-D/beta-2 is a receptor for ICAM3 and VCAM1.

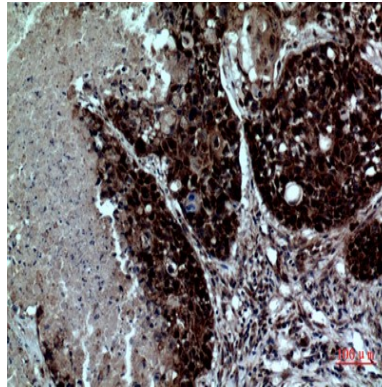
Research Area

Immunology

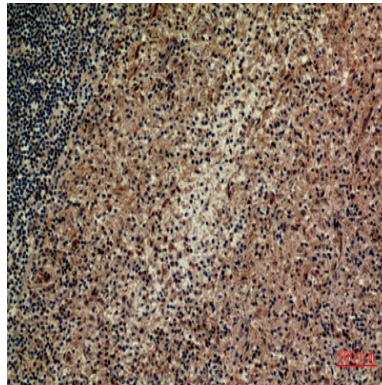
Image Data



Western blot analysis of Integrin alpha 4 in 4T 293 lysates using Integrin alpha 4 antibody.



Immunohistochemistry analysis of paraffin-embedded Human lung using Integrin alpha 4 antibody. High-pressure and temperature Sodium Citrate pH 6.0 was used for antigen retrieval.



**Product Name: Integrin alpha 4 Rabbit Polyclonal
Antibody**
Catalog #: APRab00523



Immunohistochemistry analysis of paraffin-embedded Human spleen using Integrin alpha 4 antibody. High-pressure and temperature Sodium Citrate pH 6.0 was used for antigen retrieval.

Note

For research use only.