

Summary

Production Name	CRTH2 Rabbit Polyclonal Antibody
Description	Primary antibody
Host	Rabbit
Application	WB,IHC-P,ELISA
Reactivity	Human,Mouse

Performance

Conjugation	Unconjugated
Modification	Unmodified
Isotype	IgG
Clonality	Polyclonal Antibody
Form	Liquid
Storage	Store at 4°C short term. Aliquot and store at -20°C long term. Avoid freeze/thaw cycles.
Buffer	Liquid in PBS containing 50% glycerol, 0.5% BSA and 0.02% sodium azide, pH 7.3.
Purification	Affinity Purified

Immunogen

Gene Name	PTGDR2
Alternative Names	PTGDR2; CRTH2; DL1R; GPR44; Prostaglandin D2 receptor 2; Chemoattractant receptor-homologous molecule expressed on Th2 cells; G-protein coupled receptor 44; CD294
Gene ID	11251
SwissProt ID	Q9Y5Y4

Application

Dilution Ratio	WB: 1/500-1/1000 IHC: 1/50-1/100 ELISA: 1/10000
Molecular Weight	Calculated MW: 43 kDa; Observed MW: 43 kDa

Product Name: CRTH2 Rabbit Polyclonal Antibody
Catalog #: APRab00521



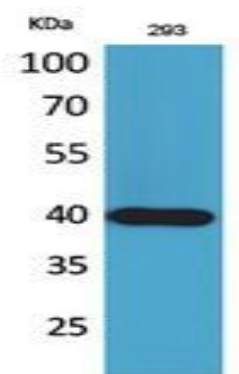
Background

Receptor for prostaglandin D2 (PGD2).

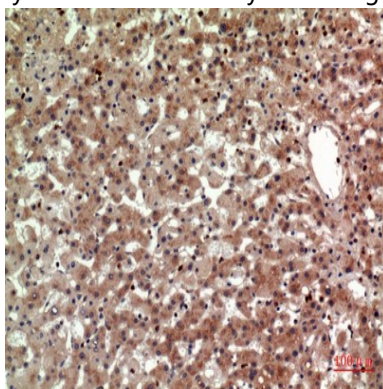
Research Area

Signal Transduction

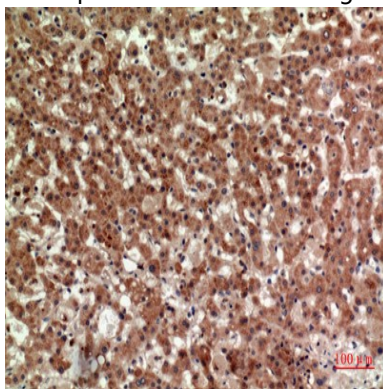
Image Data



Western blot analysis of CRTH2 in 293 lysates using CRTH2 antibody.



Immunohistochemistry analysis of paraffin-embedded Human liver using CRTH2 antibody. High-pressure and temperature Sodium Citrate pH 6.0 was used for antigen retrieval.



Immunohistochemistry analysis of paraffin-embedded Human liver using CRTH2 antibody. High-pressure and temperature

Product Name: CRTH2 Rabbit Polyclonal Antibody
Catalog #: APRab00521



Sodium Citrate pH 6.0 was used for antigen retrieval.

Note

For research use only.