

Summary

Production Name	FGF20 Rabbit Polyclonal Antibody
Description	Primary antibody
Host	Rabbit
Application	WB,IHC-P,ELISA
Reactivity	Human,Mouse,Rat

Performance

Conjugation	Unconjugated
Modification	Unmodified
Isotype	IgG
Clonality	Polyclonal Antibody
Form	Liquid
Storage	Store at 4°C short term. Aliquot and store at -20°C long term. Avoid freeze/thaw cycles.
Buffer	Liquid in PBS containing 50% glycerol, 0.5% BSA and 0.02% sodium azide, pH 7.3.
Purification	Affinity Purified

Immunogen

Gene Name	FGF20
Alternative Names	FGF20; Fibroblast growth factor 20; FGF-20
Gene ID	26281
SwissProt ID	Q9NP95

Application

Dilution Ratio	WB: 1/500-1/1000 IHC: 1/50-1/100 ELISA: 1/10000
Molecular Weight	Calculated MW: 23 kDa; Observed MW: 23 kDa

Background

The protein encoded by this gene is a member of the fibroblast growth factor family. The fibroblast growth factors possess

Product Name: FGF20 Rabbit Polyclonal Antibody
Catalog #: APRab00516

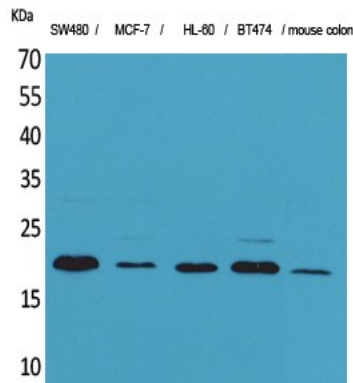


broad mitogenic and cell survival activities, and are involved in a variety of biological processes including embryonic development, cell growth, morphogenesis, tissue repair, tumor growth and invasion. This gene product is a secreted neurotrophic factor but lacks a typical signal peptide. It is expressed in normal brain, particularly the cerebellum, and may regulate central nervous system development and function. Homodimerization of this protein was shown to regulate its receptor binding activity and concentration gradient in the extracellular matrix. Genetic variations of this gene have been associated with Parkinson disease susceptibility.

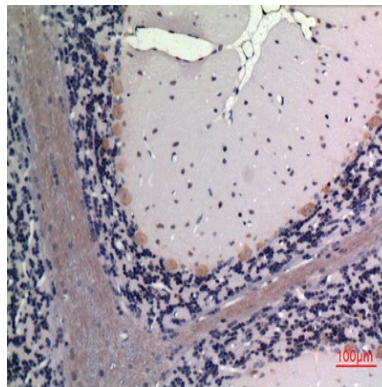
Research Area

Signal Transduction

Image Data

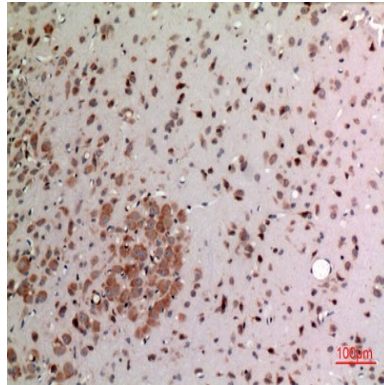


Western blot analysis of FGF20 in SW480, MCF-7, HL-60, BT474, mouse colon lysates using FGF20 antibody.



Immunohistochemistry analysis of paraffin-embedded rat brain using FGF20 antibody. High-pressure and temperature Sodium Citrate pH 6.0 was used for antigen retrieval.

Product Name: FGF20 Rabbit Polyclonal Antibody
Catalog #: APRab00516



Immunohistochemistry analysis of paraffin-embedded rat brain using FGF20 antibody. High-pressure and temperature Sodium Citrate pH 6.0 was used for antigen retrieval.

Note

For research use only.