

## Summary

<b>Production Name</b>	ASAH3L Rabbit Polyclonal Antibody
<b>Description</b>	Primary antibody
<b>Host</b>	Rabbit
<b>Application</b>	WB,IHC-P,ELISA
<b>Reactivity</b>	Human,Mouse

## Performance

<b>Conjugation</b>	Unconjugated
<b>Modification</b>	Unmodified
<b>Isotype</b>	IgG
<b>Clonality</b>	Polyclonal Antibody
<b>Form</b>	Liquid
<b>Storage</b>	Store at 4°C short term. Aliquot and store at -20°C long term. Avoid freeze/thaw cycles.
<b>Buffer</b>	Liquid in PBS containing 50% glycerol, 0.5% BSA and 0.02% sodium azide, pH 7.3.
<b>Purification</b>	Affinity Purified

## Immunogen

<b>Gene Name</b>	ACER2
<b>Alternative Names</b>	ACER2; ASAH3L; PP11646; Alkaline ceramidase 2; AlkCDase 2; Alkaline CDase 2; haCER2; Acylsphingosine deacylase 3-like; N-acylsphingosine amidohydrolase 3-like
<b>Gene ID</b>	340485
<b>SwissProt ID</b>	Q5QJU3

## Application

<b>Dilution Ratio</b>	WB: 1/500-1/1000 IHC: 1/50-1/100 ELISA: 1/10000
<b>Molecular Weight</b>	Calculated MW: 31 kDa; Observed MW: 31 kDa

## Background

**Product Name: ASAH3L Rabbit Polyclonal Antibody**  
**Catalog #: APRab00504**

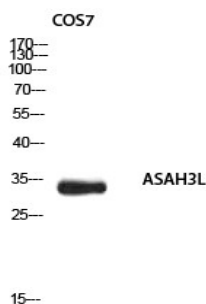


Golgi ceramidase that catalyzes the hydrolysis of ceramides into sphingoid bases like sphingosine and free fatty acids at alkaline pH.

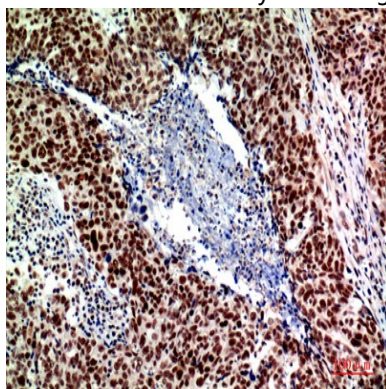
## Research Area

Signal Transduction

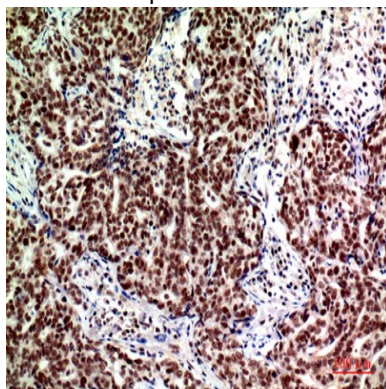
## Image Data



Western blot analysis of ASAH3L in COS7 lysates using ASAH3L antibody.



Immunohistochemistry analysis of paraffin-embedded Human breast cancer using ASAH3L antibody. High-pressure and temperature Sodium Citrate pH 6.0 was used for antigen retrieval.

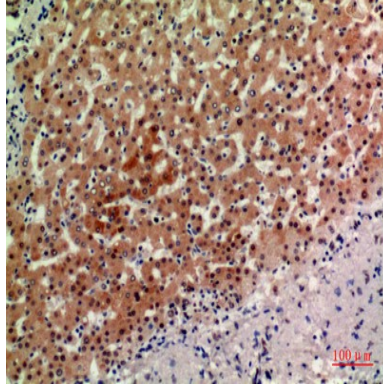


Immunohistochemistry analysis of paraffin-embedded Human breast cancer using ASAH3L antibody. High-pressure and

**Product Name: ASAH3L Rabbit Polyclonal Antibody**  
**Catalog #: APRab00504**



temperature Sodium Citrate pH 6.0 was used for antigen retrieval.



Immunohistochemistry analysis of paraffin-embedded Human liver using ASAH3L antibody. High-pressure and temperature Sodium Citrate pH 6.0 was used for antigen retrieval.

### **Note**

For research use only.