

Summary

Production Name	NTE Rabbit Polyclonal Antibody
Description	Primary antibody
Host	Rabbit
Application	WB,IHC-P,ELISA
Reactivity	Human,Mouse,Rat

Performance

Conjugation	Unconjugated
Modification	Unmodified
Isotype	IgG
Clonality	Polyclonal Antibody
Form	Liquid
Storage	Store at 4°C short term. Aliquot and store at -20°C long term. Avoid freeze/thaw cycles.
Buffer	Liquid in PBS containing 50% glycerol, 0.5% BSA and 0.02% sodium azide, pH 7.3.
Purification	Affinity Purified

Immunogen

Gene Name	PNPLA6
Alternative Names	PNPLA6; NTE; Neuropathy target esterase; Patatin-like phospholipase domain-containing protein 6
Gene ID	10908
SwissProt ID	Q8IY17

Application

Dilution Ratio	WB: 1/500-1/1000 IHC: 1/50-1/100 ELISA: 1/10000
Molecular Weight	Calculated MW: 151 kDa; Observed MW: 151 kDa

Background

Product Name: NTE Rabbit Polyclonal Antibody
Catalog #: APRab00492

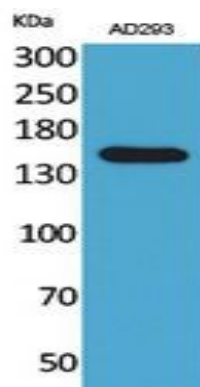


Phospholipase B that deacylates intracellular phosphatidylcholine (PtdCho), generating glycerophosphocholine (GroPtdCho).

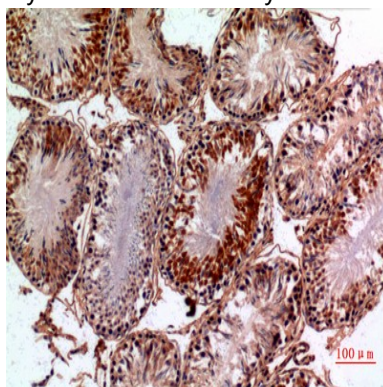
Research Area

Neuroscience

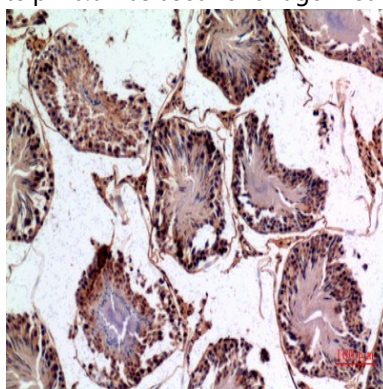
Image Data



Western blot analysis of NTE in AD293 lysates using NTE antibody.



Immunohistochemistry analysis of paraffin-embedded rat testis using NTE antibody. High-pressure and temperature Sodium Citrate pH 6.0 was used for antigen retrieval.

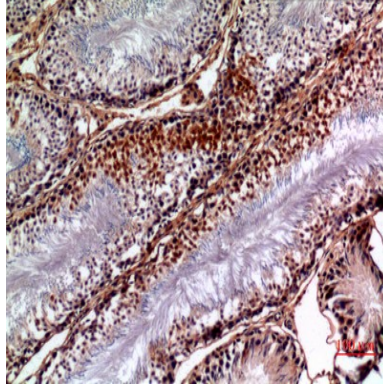


Immunohistochemistry analysis of paraffin-embedded rat testis using NTE antibody. High-pressure and temperature Sodium

Product Name: NTE Rabbit Polyclonal Antibody
Catalog #: APRab00492



Citrate pH 6.0 was used for antigen retrieval.



Immunohistochemistry analysis of paraffin-embedded rat testis using NTE antibody. High-pressure and temperature Sodium Citrate pH 6.0 was used for antigen retrieval.

Note

For research use only.