
Summary

Production Name	KLF13 Rabbit Polyclonal Antibody
Description	Primary antibody
Host	Rabbit
Application	WB,IHC-P,ELISA
Reactivity	Human,Mouse

Performance

Conjugation	Unconjugated
Modification	Unmodified
Isotype	IgG
Clonality	Polyclonal Antibody
Form	Liquid
Storage	Store at 4°C short term. Aliquot and store at -20°C long term. Avoid freeze/thaw cycles.
Buffer	Liquid in PBS containing 50% glycerol, 0.5% BSA and 0.02% sodium azide, pH 7.3.
Purification	Affinity Purified

Immunogen

Gene Name	KLF13
Alternative Names	KLF13; BTEB3; NSLP1; Krueppel-like factor 13; Basic transcription element-binding protein 3; BTE-binding protein 3; Novel Sp1-like zinc finger transcription factor 1; RANTES factor of late activated T-lymphocytes 1; RFLAT-1; Transcription factor BTEB3; Transcription factor NSLP1
Gene ID	51621
SwissProt ID	Q9Y2Y9

Application

Dilution Ratio	WB: 1/500-1/1000 IHC: 1/50-1/100 ELISA: 1/10000
Molecular Weight	Calculated MW: 31 kDa; Observed MW: 31 kDa

Product Name: KLF13 Rabbit Polyclonal Antibody
Catalog #: APRab00491



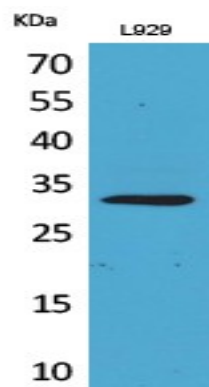
Background

Represses transcription by binding to the BTE site, a GC-rich DNA element, in competition with the activator SP1.

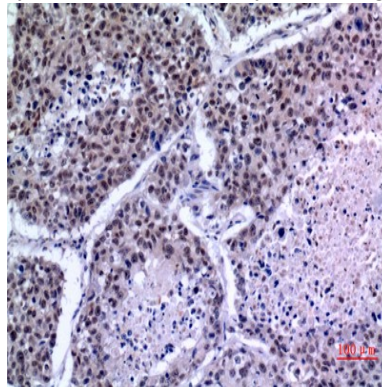
Research Area

Epigenetics and Nuclear Signaling

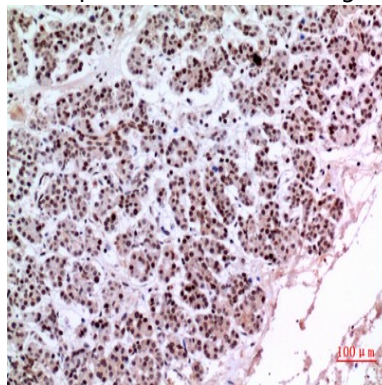
Image Data



Western blot analysis of KLF13 in L929 lysates using KLF13 antibody.



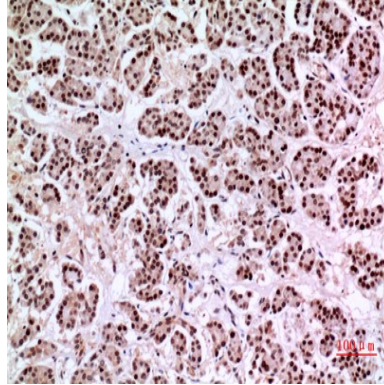
Immunohistochemistry analysis of paraffin-embedded Human lung using KLF13 antibody. High-pressure and temperature Sodium Citrate pH 6.0 was used for antigen retrieval.



Product Name: KLF13 Rabbit Polyclonal Antibody
Catalog #: APRab00491



Immunohistochemistry analysis of paraffin-embedded Human pancreas using KLF13 antibody. High-pressure and temperature Sodium Citrate pH 6.0 was used for antigen retrieval.



Immunohistochemistry analysis of paraffin-embedded Human pancreas using KLF13 antibody. High-pressure and temperature Sodium Citrate pH 6.0 was used for antigen retrieval.

Note

For research use only.