

Product Name: alpha 1 Fetoprotein Rabbit Polyclonal Antibody
Catalog #: APRab00486



Summary

| | |
|------------------------|--|
| Production Name | alpha 1 Fetoprotein Rabbit Polyclonal Antibody |
| Description | Primary antibody |
| Host | Rabbit |
| Application | WB,IHC-P,ELISA |
| Reactivity | Human |

Performance

| | |
|---------------------|--|
| Conjugation | Unconjugated |
| Modification | Unmodified |
| Isotype | IgG |
| Clonality | Polyclonal Antibody |
| Form | Liquid |
| Storage | Store at 4°C short term. Aliquot and store at -20°C long term. Avoid freeze/thaw cycles. |
| Buffer | Liquid in PBS containing 50% glycerol, 0.5% BSA and 0.02% sodium azide, pH 7.3. |
| Purification | Affinity Purified |

Immunogen

| | |
|--------------------------|--|
| Gene Name | AFP |
| Alternative Names | Alpha-fetoprotein; Alpha-1-fetoprotein; Alpha-fetoglobulin |
| Gene ID | 174 |
| SwissProt ID | P02771 |

Application

| | |
|-------------------------|---|
| Dilution Ratio | WB: 1/500-1/1000 IHC: 1/50-1/100 ELISA: 1/10000 |
| Molecular Weight | Calculated MW: 69 kDa; Observed MW: 69 kDa |

Background

Product Name: alpha 1 Fetoprotein Rabbit Polyclonal Antibody
Catalog #: APRab00486

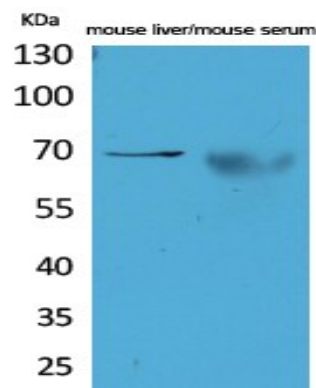


Alpha-fetoprotein (AFP) is a 65 kDa glycoprotein found in the mammalian fetal liver, yolk sac, and GI tract. In normal adult cells, p53 binds to the repressor region of the AFP gene, thereby blocking transcription. Mutations in both p53 and β -catenin are associated with aberrant expression of AFP. Research studies have shown that elevated serum AFP levels are predictive of hepatocellular carcinoma .

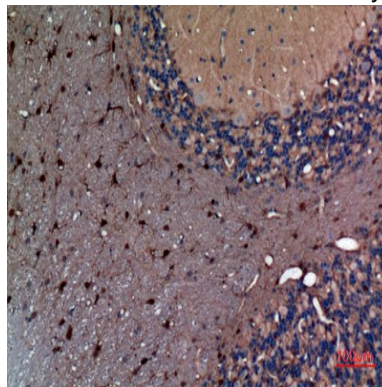
Research Area

Cancer

Image Data

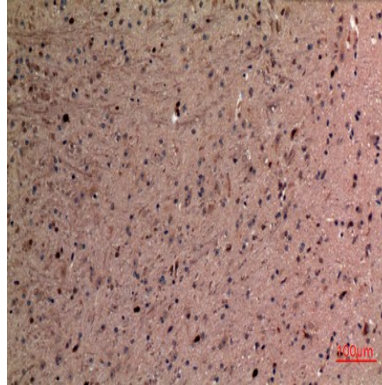


Western blot analysis of alpha 1 Fetoprotein in mouse liver, mouse serum lysates using alpha 1 Fetoprotein antibody.

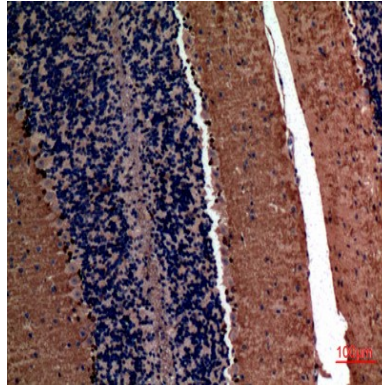


Immunohistochemistry analysis of paraffin-embedded rat brain using alpha 1 Fetoprotein antibody. High-pressure and temperature Sodium Citrate pH 6.0 was used for antigen retrieval.

**Product Name: alpha 1 Fetoprotein Rabbit Polyclonal
Antibody**
Catalog #: APRab00486



Immunohistochemistry analysis of paraffin-embedded mouse brain using alpha 1 Fetoprotein antibody. High-pressure and temperature Sodium Citrate pH 6.0 was used for antigen retrieval.



Immunohistochemistry analysis of paraffin-embedded mouse brain using alpha 1 Fetoprotein antibody. High-pressure and temperature Sodium Citrate pH 6.0 was used for antigen retrieval.

Note

For research use only.