

Summary

Production Name	IL-28 Rabbit Polyclonal Antibody
Description	Primary antibody
Host	Rabbit
Application	WB,IHC-P,ELISA
Reactivity	Human

Performance

Conjugation	Unconjugated
Modification	Unmodified
Isotype	IgG
Clonality	Polyclonal Antibody
Form	Liquid
Storage	Store at 4°C short term. Aliquot and store at -20°C long term. Avoid freeze/thaw cycles.
Buffer	Liquid in PBS containing 50% glycerol, 0.5% BSA and 0.02% sodium azide, pH 7.3.
Purification	Affinity Purified

Immunogen

Gene Name	IFNL2
Alternative Names	IL-28; IL28A; IFNL2; ZCYTO20; Interleukin-28A; IL-28A; Cytokine Zcyto20; Interferon lambda-2; IFN-lambda-2
Gene ID	282616
SwissProt ID	Q8IZJ0

Application

Dilution Ratio	WB: 1/500-1/1000 IHC: 1/50-1/100 ELISA: 1/10000
Molecular Weight	Calculated MW: 22 kDa; Observed MW: 25 kDa

Background

Product Name: IL-28 Rabbit Polyclonal Antibody
Catalog #: APRab00471

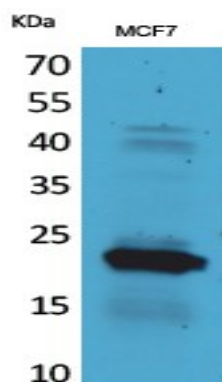


Cytokine with antiviral, antitumour and immunomodulatory activities.

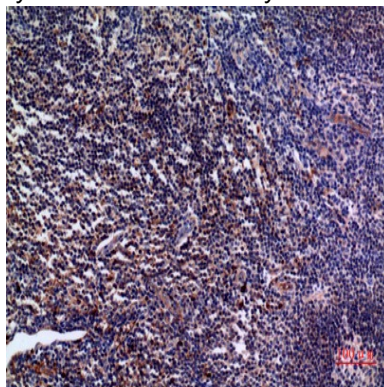
Research Area

Immunology

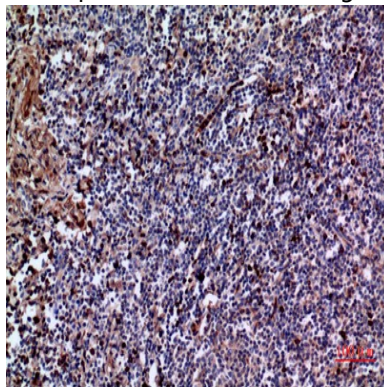
Image Data



Western blot analysis of IL-28 in MCF-7 lysates using IL-28 antibody.

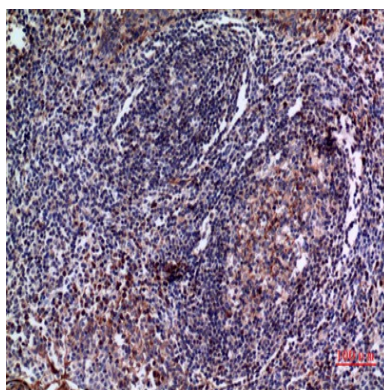


Immunohistochemistry analysis of paraffin-embedded Human tonsil using IL-28 antibody. High-pressure and temperature Sodium Citrate pH 6.0 was used for antigen retrieval.

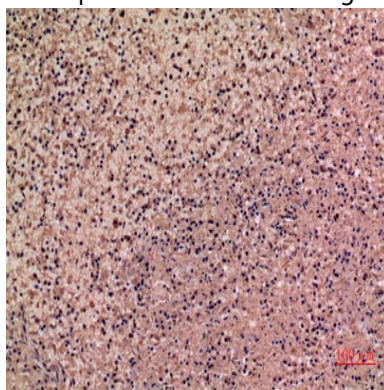


Immunohistochemistry analysis of paraffin-embedded Human tonsil using IL-28 antibody. High-pressure and temperature Sodium Citrate pH 6.0 was used for antigen retrieval.

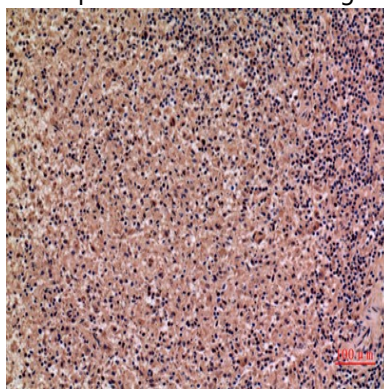
Product Name: IL-28 Rabbit Polyclonal Antibody
Catalog #: APRab00471



Immunohistochemistry analysis of paraffin-embedded Human tonsil using IL-28 antibody. High-pressure and temperature Sodium Citrate pH 6.0 was used for antigen retrieval.



Immunohistochemistry analysis of paraffin-embedded Human spleen using IL-28 antibody. High-pressure and temperature Sodium Citrate pH 6.0 was used for antigen retrieval.



Immunohistochemistry analysis of paraffin-embedded Human spleen using IL-28 antibody. High-pressure and temperature Sodium Citrate pH 6.0 was used for antigen retrieval.

Note

For research use only.