

## Summary

<b>Production Name</b>	p21 Rabbit Polyclonal Antibody
<b>Description</b>	Primary antibody
<b>Host</b>	Rabbit
<b>Application</b>	WB,IHC-F,IHC-P,ICC/IF,ELISA
<b>Reactivity</b>	Human,Mouse,Rat

## Performance

<b>Conjugation</b>	Unconjugated
<b>Modification</b>	Unmodified
<b>Isotype</b>	IgG
<b>Clonality</b>	Polyclonal Antibody
<b>Form</b>	Liquid
<b>Storage</b>	Store at 4°C short term. Aliquot and store at -20°C long term. Avoid freeze/thaw cycles.
<b>Buffer</b>	Liquid in PBS containing 50% glycerol, 0.5% BSA and 0.02% sodium azide, pH 7.3.
<b>Purification</b>	Affinity Purified

## Immunogen

<b>Gene Name</b>	CDKN1A CDKN1A; CAP20; CDKN1; CIP1; MDA6; PIC1; SDI1; WAF1; Cyclin-dependent kinase inhibitor 1; CDK-interacting protein 1; Melanoma differentiation-associated protein 6;
<b>Alternative Names</b>	MDA-6; p21
<b>Gene ID</b>	1026
<b>SwissProt ID</b>	P38936

## Application

<b>Dilution Ratio</b>	WB: 1/500-1/1000 IHC: 1/50-1/100 IF: 1/50-1/200 ELISA: 1/10000
<b>Molecular Weight</b>	Calculated MW: 18 kDa; Observed MW: 26 kDa

**Product Name: p21 Rabbit Polyclonal Antibody**  
**Catalog #: APRab00466**



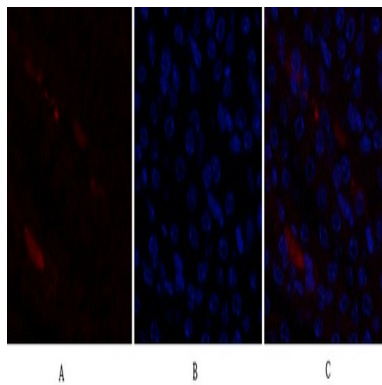
## Background

The tumor suppressor protein p21 Waf1/Cip1 acts as an inhibitor of cell cycle progression. It functions in stoichiometric relationships forming heterotrimeric complexes with cyclins and cyclin-dependent kinases. In association with CDK2 complexes, it serves to inhibit kinase activity and block progression through G1/S. However, p21 may also enhance assembly and activity in complexes of CDK4 or CDK6 and cyclin D.

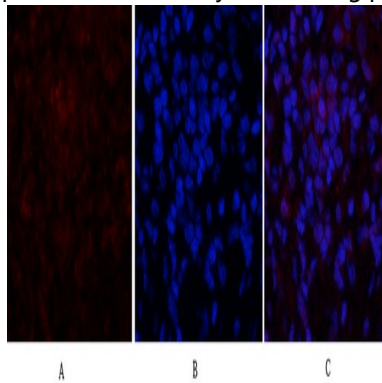
## Research Area

Cell Biology

## Image Data

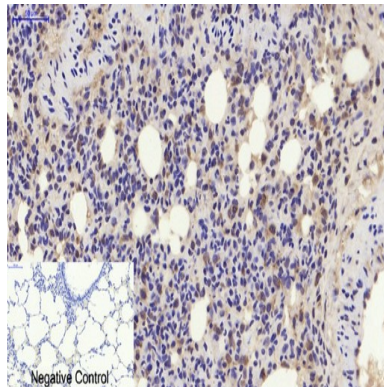


Immunofluorescence analysis of p21 in mouse kidney tissue using p21 antibody(red),and DAPI (blue).

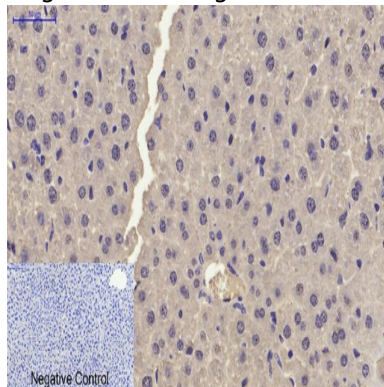


Immunofluorescence analysis of p21 in rat lung tissue using p21 antibody(red),and DAPI (blue).

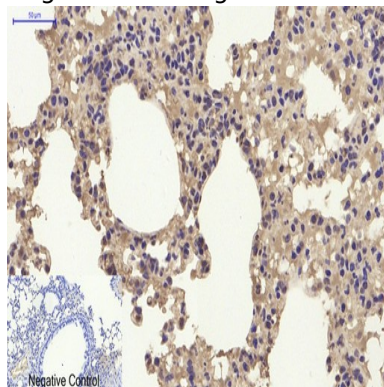
**Product Name: p21 Rabbit Polyclonal Antibody**  
**Catalog #: APRab00466**



Immunohistochemistry analysis of paraffin-embedded rat lung tissue using p21 antibody. High-pressure and temperature Sodium Citrate pH 6.0 was used for antigen retrieval. Negative control was used by secondary antibody only.

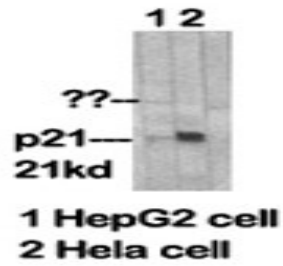


Immunohistochemistry analysis of paraffin-embedded mouse liver tissue using p21 antibody. High-pressure and temperature Sodium Citrate pH 6.0 was used for antigen retrieval. Negative control was used by secondary antibody only.



Immunohistochemistry analysis of paraffin-embedded mouse lung tissue using p21 antibody. High-pressure and temperature Sodium Citrate pH 6.0 was used for antigen retrieval. Negative control was used by secondary antibody only.

**Product Name: p21 Rabbit Polyclonal Antibody**  
**Catalog #: APRab00466**



Western blot analysis of p21 in various lysates using p21 antibody

**Note**

For research use only.