

Product Name: Toll-Like Receptor 4 Rabbit Polyclonal Antibody
Catalog #: APRab00443



Summary

| | |
|------------------------|---|
| Production Name | Toll-Like Receptor 4 Rabbit Polyclonal Antibody |
| Description | Primary antibody |
| Host | Rabbit |
| Application | IHC-P |
| Reactivity | Human,Mouse,Rat |

Performance

| | |
|---------------------|--|
| Conjugation | Unconjugated |
| Modification | Unmodified |
| Isotype | IgG |
| Clonality | Polyclonal Antibody |
| Form | Liquid |
| Storage | Store at 4°C short term. Aliquot and store at -20°C long term. Avoid freeze/thaw cycles. |
| Buffer | Liquid in PBS containing 50% glycerol, 0.5% BSA and 0.02% sodium azide, pH 7.3. |
| Purification | Affinity Purified |

Immunogen

| | |
|--------------------------|---|
| Gene Name | TLR4 |
| Alternative Names | TLR4; Toll-like receptor 4; hToll; CD antigen CD284 |
| Gene ID | 7099 |
| SwissProt ID | O00206 |

Application

| | |
|-------------------------|-----------------|
| Dilution Ratio | IHC: 1/50-1/100 |
| Molecular Weight | - |

Background

Product Name: Toll-Like Receptor 4 Rabbit Polyclonal Antibody
Catalog #: APRab00443

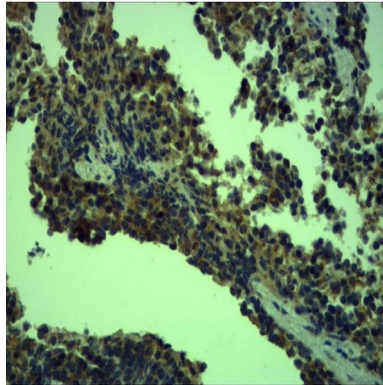


Cooperates with LY96 and CD14 to mediate the innate immune response to bacterial lipopolysaccharide (LPS).

Research Area

Immunology

Image Data



Immunohistochemistry analysis of paraffin-embedded mouse Spleen Tissue using Toll-Like Receptor 4 antibody. High-pressure and temperature Sodium Citrate pH 6.0 was used for antigen retrieval.

Note

For research use only.