

Product Name: Rab2B Rabbit Polyclonal Antibody
Catalog #: APRab00428



Summary

Production Name	Rab2B Rabbit Polyclonal Antibody
Description	Primary antibody
Host	Rabbit
Application	WB,ELISA
Reactivity	Human,Mouse,Rat

Performance

Conjugation	Unconjugated
Modification	Unmodified
Isotype	IgG
Clonality	Polyclonal Antibody
Form	Liquid
Storage	Store at 4°C short term. Aliquot and store at -20°C long term. Avoid freeze/thaw cycles.
Buffer	Liquid in PBS containing 50% glycerol, 0.5% BSA and 0.02% sodium azide, pH 7.3.
Purification	Affinity Chromatography

Immunogen

Gene Name	RAB2B
Alternative Names	Ras-related protein Rab-2B
Gene ID	84932
SwissProt ID	Q8WUD1

Application

Dilution Ratio	WB: 1/500-1/1000 ELISA: 1/10000
Molecular Weight	Calculated MW: 24 kDa; Observed MW: 24 kDa

Background

Required for protein transport from the endoplasmic reticulum to the Golgi complex.

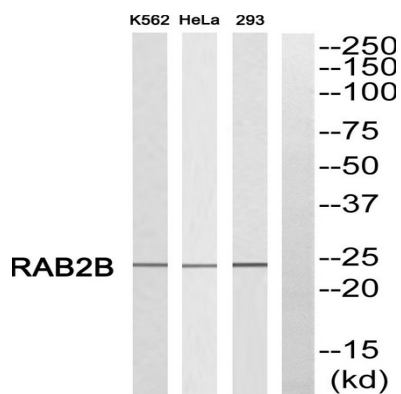
Product Name: Rab2B Rabbit Polyclonal Antibody
Catalog #: APRab00428



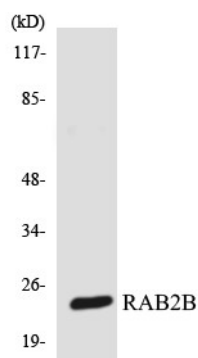
Research Area

Signal Transduction

Image Data



Western blot analysis of Rab2B in K562, HeLa, 293 lysates using RAB2B antibody. The lane on the right is blocked with the RAB2B peptide.



Western blot analysis of Rab2B in 293 lysates using RAB2B antibody.

Note

For research use only.