

Summary

Production Name	SGLT1 Rabbit Polyclonal Antibody
Description	Primary antibody
Host	Rabbit
Application	WB,ELISA
Reactivity	Human,Mouse,Rat

Performance

Conjugation	Unconjugated
Modification	Unmodified
Isotype	IgG
Clonality	Polyclonal Antibody
Form	Liquid
Storage	Store at 4°C short term. Aliquot and store at -20°C long term. Avoid freeze/thaw cycles.
Buffer	Liquid in PBS containing 50% glycerol, 0.5% BSA and 0.02% sodium azide, pH 7.3.
Purification	Affinity Chromatography

Immunogen

Gene Name	SLC5A1
Alternative Names	SLC5A1; NAGT; SGLT1; Sodium/glucose cotransporter 1; Na(+)/glucose cotransporter 1; High affinity sodium-glucose cotransporter; Solute carrier family 5 member 1
Gene ID	6523
SwissProt ID	P13866

Application

Dilution Ratio	WB: 1/500-1/1000 ELISA: 1/10000
Molecular Weight	Calculated MW: 73 kDa; Observed MW: 73 kDa

Background

Product Name: SGLT1 Rabbit Polyclonal Antibody
Catalog #: APRab00424

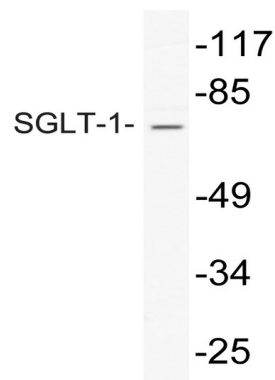


Actively transports glucose into cells by Na⁺ cotransport with a Na⁺ to glucose coupling ratio of 2:1. Efficient substrate transport in mammalian kidney is provided by the concerted action of a low affinity high capacity and a high affinity low capacity Na⁺/glucose cotransporter arranged in series along kidney proximal tubules.

Research Area

Signal Transduction

Image Data



Western blot analysis of SGLT1 in HepG2 lysates using SGLT1 antibody.

Note

For research use only.