

Product Name: SENP3 Rabbit Polyclonal Antibody
Catalog #: APRab00423



Summary

Production Name	SENP3 Rabbit Polyclonal Antibody
Description	Primary antibody
Host	Rabbit
Application	WB,IHC-P,ELISA
Reactivity	Human,Mouse

Performance

Conjugation	Unconjugated
Modification	Unmodified
Isotype	IgG
Clonality	Polyclonal Antibody
Form	Liquid
Storage	Store at 4°C short term. Aliquot and store at -20°C long term. Avoid freeze/thaw cycles.
Buffer	Liquid in PBS containing 50% glycerol, 0.5% BSA and 0.02% sodium azide, pH 7.3.
Purification	Affinity Chromatography

Immunogen

Gene Name	SENP3
Alternative Names	SSP3; Ulp1; SMT3IP1
Gene ID	26168
SwissProt ID	Q9H4L4

Application

Dilution Ratio	WB: 1/500-1/1000 IHC: 1/50-1/100 ELISA: 1/10000
Molecular Weight	Calculated MW: 65 kDa; Observed MW: 80 kDa

Background

The reversible posttranslational modification of proteins by the addition of small ubiquitin-like SUMO proteins (see

Product Name: SENP3 Rabbit Polyclonal Antibody
Catalog #: APRab00423

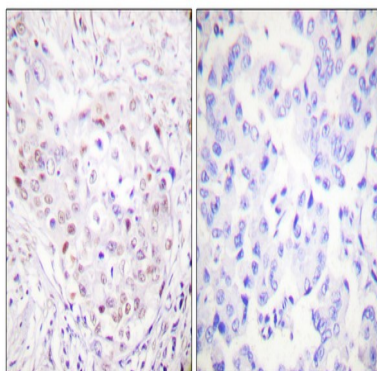


SUMO1; MIM 601912) is required for numerous biologic processes. SUMO-specific proteases, such as SENP3, are responsible for the initial processing of SUMO precursors to generate a C-terminal diglycine motif required for the conjugation reaction.

Research Area

Cell Biology

Image Data



Immunohistochemistry analysis of paraffin-embedded Human breast carcinoma tissue, using SENP3 antibody. High-pressure and temperature Sodium Citrate pH 6.0 was used for antigen retrieval. Sample with blocking peptide on the right.

Note

For research use only.