

Product Name: Myomesin 2 Rabbit Polyclonal Antibody
Catalog #: APRab00409



Summary

Production Name	Myomesin 2 Rabbit Polyclonal Antibody
Description	Primary antibody
Host	Rabbit
Application	WB,ELISA
Reactivity	Human,Mouse,Monkey

Performance

Conjugation	Unconjugated
Modification	Unmodified
Isotype	IgG
Clonality	Polyclonal Antibody
Form	Liquid
Storage	Store at 4°C short term. Aliquot and store at -20°C long term. Avoid freeze/thaw cycles.
Buffer	Liquid in PBS containing 50% glycerol, 0.5% BSA and 0.02% sodium azide, pH 7.3.
Purification	Affinity Chromatography

Immunogen

Gene Name	MYOM2
Alternative Names	TTNAP
Gene ID	9172
SwissProt ID	P54296

Application

Dilution Ratio	WB: 1/500-1/1000 ELISA: 1/10000
Molecular Weight	Calculated MW: 165 kDa; Observed MW: 165 kDa

Background

Major component of the vertebrate myofibrillar M band. Binds myosin, titin, and light meromyosin. This binding is dose

Product Name: Myomesin 2 Rabbit Polyclonal Antibody
Catalog #: APRab00409

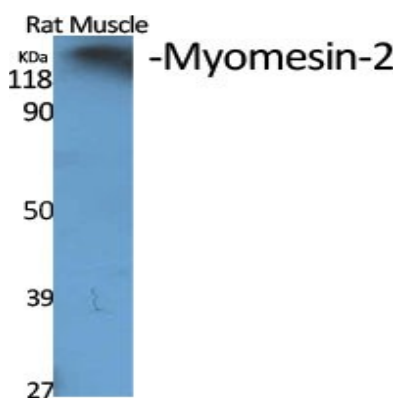


dependent.

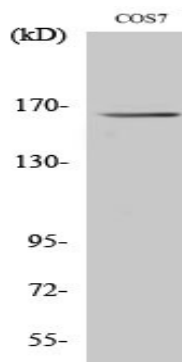
Research Area

Signal Transduction

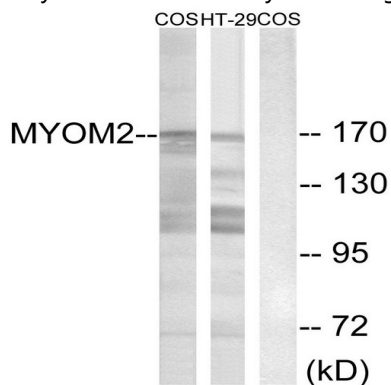
Image Data



Western blot analysis of Myomesin 2 in various lysates using Myomesin 2 antibody.



Western blot analysis of Myomesin 2 in HT-29 lysates using Myomesin2 antibody.



Western blot analysis of Myomesin 2 in COS7 and HT-29 lysates using MYOM2 antibody. The lane on the right is blocked with the synthesized peptide.

Product Name: Myomesin 2 Rabbit Polyclonal Antibody
Catalog #: APRab00409



Note

For research use only.