

Product Name: Laminin alpha 5 Rabbit Polyclonal Antibody
Catalog #: APRab00405

Summary

Production Name	Laminin alpha 5 Rabbit Polyclonal Antibody
Description	Primary antibody
Host	Rabbit
Application	WB,IHC-P,ELISA
Reactivity	Human,Mouse

Performance

Conjugation	Unconjugated
Modification	Unmodified
Isotype	IgG
Clonality	Polyclonal Antibody
Form	Liquid
Storage	Store at 4°C short term. Aliquot and store at -20°C long term. Avoid freeze/thaw cycles.
Buffer	Liquid in PBS containing 50% glycerol, 0.5% BSA and 0.02% sodium azide, pH 7.3.
Purification	Affinity Chromatography

Immunogen

Gene Name	LAMA5
Alternative Names	Laminin-10 subunit alpha; Laminin-11 subunit alpha; Laminin-15 subunit alpha
Gene ID	3911
SwissProt ID	O15230

Application

Dilution Ratio	WB: 1/500-1/1000 IHC: 1/50-1/100 ELISA: 1/10000
Molecular Weight	Calculated MW: 400 kDa; Observed MW: 400 kDa

Background

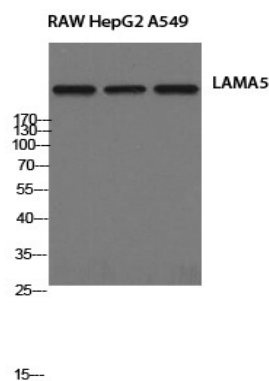
Product Name: Laminin alpha 5 Rabbit Polyclonal Antibody
Catalog #: APRab00405

Components of the extracellular matrix exert myriad effects on tissues throughout the body. In particular, the laminins, a family of heterotrimeric extracellular glycoproteins, affect tissue development and integrity in such diverse organs as the kidney, lung, skin, and nervous system. It is thought that laminins mediate the attachment, migration, and organization of cells into tissues during embryonic development by interacting with other extracellular matrix components. Laminins function as heterotrimeric complexes of alpha, beta, and gamma chains, with each chain type representing a different subfamily of proteins. The protein encoded by this gene belongs to the alpha subfamily of laminin chains and is a major component of basement membranes. Two transcript variants encoding different isoforms have been found for this gene, but the full-length nature of one of them has not been determined.

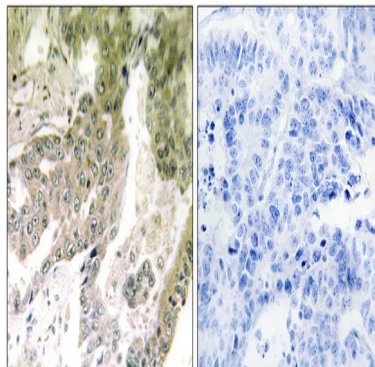
Research Area

Signal Transduction

Image Data



Western blot analysis of Laminin alpha 5 in RAW, HepG2, A549 lysates using Laminin alpha 5 antibody.



Immunohistochemistry analysis of paraffin-embedded Human lung carcinoma tissue, using LAMA5 antibody. High-pressure and temperature Sodium Citrate pH 6.0 was used for antigen retrieval. Sample with blocking peptide on the right.

**Product Name: Laminin alpha 5 Rabbit Polyclonal
Antibody**
Catalog #: APRab00405



Note

For research use only.