

## Summary

<b>Production Name</b>	EGR2 Rabbit Polyclonal Antibody
<b>Description</b>	Primary antibody
<b>Host</b>	Rabbit
<b>Application</b>	WB,IHC-F,IHC-P,ICC/IF,ELISA
<b>Reactivity</b>	Human,Mouse,Rat

## Performance

<b>Conjugation</b>	Unconjugated
<b>Modification</b>	Unmodified
<b>Isotype</b>	IgG
<b>Clonality</b>	Polyclonal Antibody
<b>Form</b>	Liquid
<b>Storage</b>	Store at 4°C short term. Aliquot and store at -20°C long term. Avoid freeze/thaw cycles.
<b>Buffer</b>	Liquid in PBS containing 50% glycerol, 0.5% BSA and 0.02% sodium azide, pH 7.3.
<b>Purification</b>	Affinity Chromatography

## Immunogen

<b>Gene Name</b>	EGR2
<b>Alternative Names</b>	EGR2;KROX20; E3 SUMO-protein ligase EGR2;AT591;E3 SUMO-protein transferase ERG2 Curated;Early growth response protein 2 (EGR-2);Zinc finger protein Krox-20;
<b>Gene ID</b>	1959
<b>SwissProt ID</b>	P11161

## Application

<b>Dilution Ratio</b>	WB: 1/500-1/1000 IHC: 1/50-1/100 IF: 1/50-1/200 ELISA: 1/10000
<b>Molecular Weight</b>	Calculated MW: 50 kDa; Observed MW: 50 kDa

## Background

**Product Name: EGR2 Rabbit Polyclonal Antibody**  
**Catalog #: APRab00398**

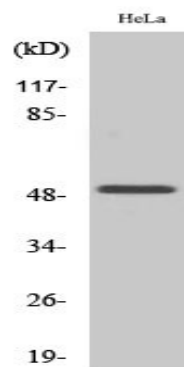


Sequence-specific DNA-binding transcription factor. Binds to two specific DNA sites located in the promoter region of HOXA4.

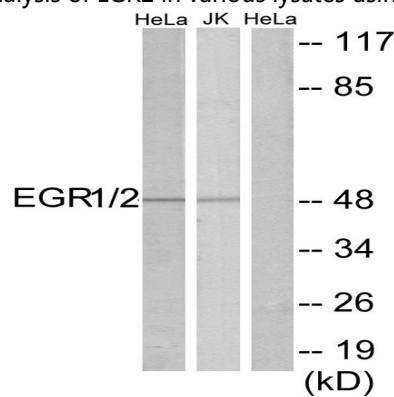
## Research Area

Epigenetics and Nuclear Signaling

## Image Data



Western blot analysis of EGR2 in various lysates using Egr2 antibody.



Western blot analysis of EGR2 in HeLa and Jurkat lysates using EGR1/2 antibody. The lane on the right is blocked with the synthesized peptide.

## Note

For research use only.